



**RPA**  
Institute for  
Academic Medicine

# **RPA DIVISION OF MEDICINE RESEARCH ACTIVITY**

**Reporting Period:**

January - December 2022

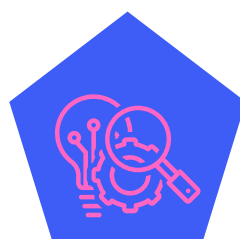


Sydney  
Local Health District

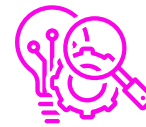
# TABLE OF CONTENTS



01	Introduction
02	Research at the IAM
02	IAM Research Governance
03	Research Metrics
07	Addiction Medicine, Pharmacology and Toxicology
08	Cardiology
10	Clinical Immunology and Allergy
11	Endocrinology
13	AW Morrow Gastroenterology and Liver Centre
15	Cell and Molecular Therapies
17	Geriatrics
19	Clinical Haematology
21	Infectious Diseases and Microbiology
22	Medical Genomics
24	Neurology
26	Palliative Care
28	Renal Medicine
30	Respiratory and Sleep Medicine
32	Rheumatology
33	Future Direction



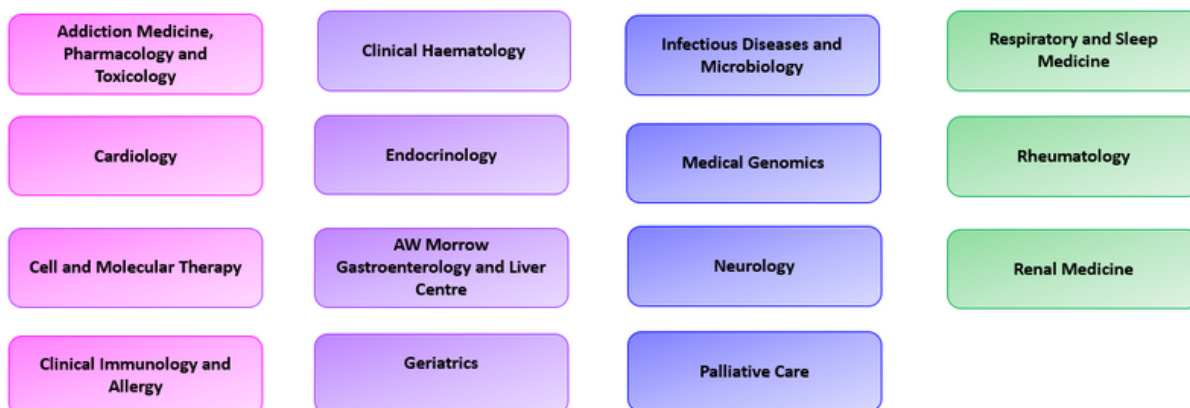
# INTRODUCTION



## Background

The Royal Prince Alfred (RPA) Hospital Institute for Academic Medicine (IAM) was established in 2023 to promote and strengthen the culture of research, renewal and enquiry that has characterised RPA since its beginning. Key objectives within the IAM's remit include mentorship and advocacy, professional development, strategic partnerships, research support and career development.

The IAM collaborates across the Division of Medicine to support the research endeavours of the 15 RPA Medical Departments. A number of these departments have fostered incredibly strong research programs, creating further opportunity for the IAM to increase linkages, synergies and research collaboration across the Division.



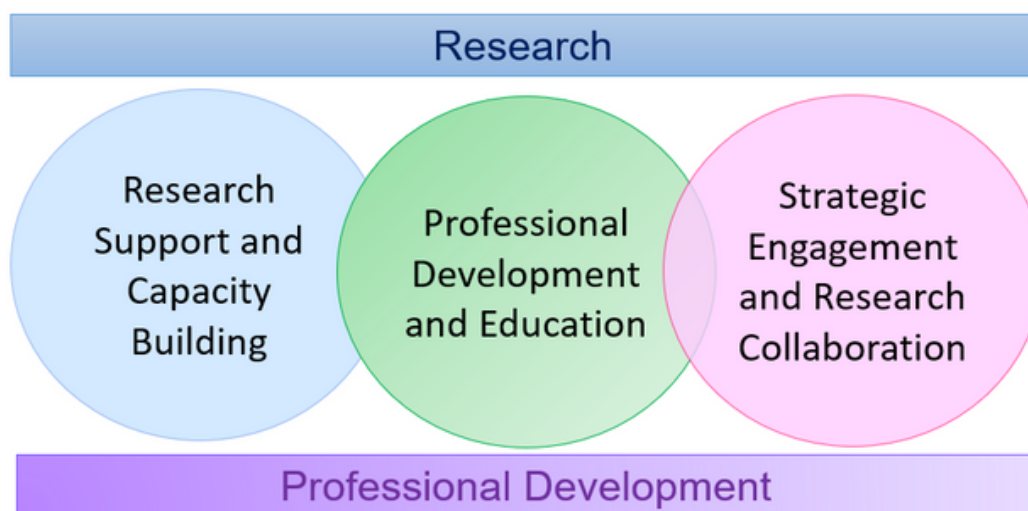
This research activity report has been compiled for the IAM, RPA and SLHD senior leadership teams to provide an overview of research activity currently reported for the RPA Division of Medicine over the 12month period from January - December 2022. This information will be reported to the IAM Research and Innovations Forum and the IAM Advisory Council.

# RESEARCH AT THE IAM

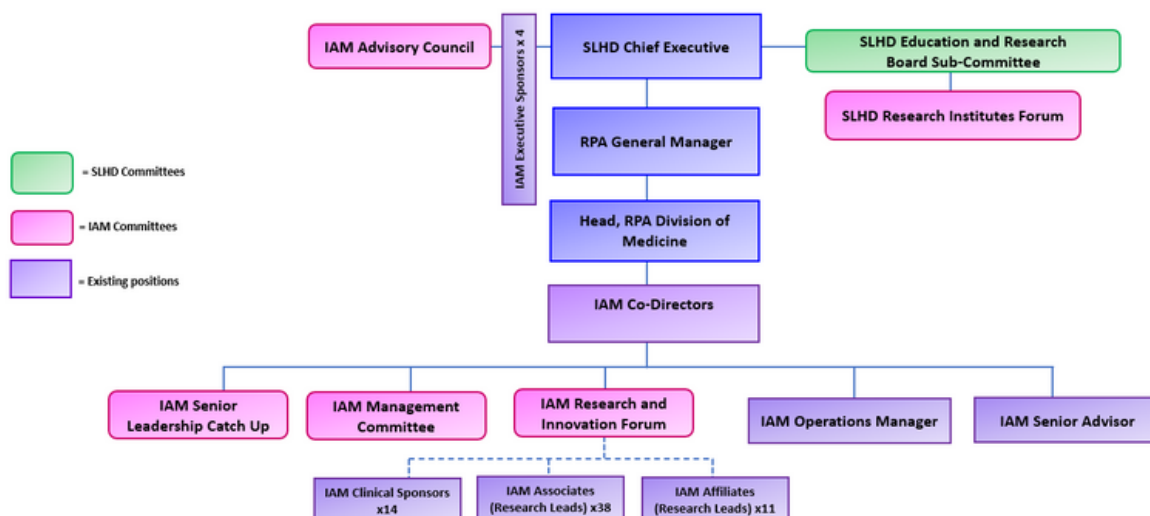


## Research Portfolio

The focus on research underpins all three of the IAM's strategic portfolios, which include research support and capacity building, professional development and education and strategic engagement and research collaboration.



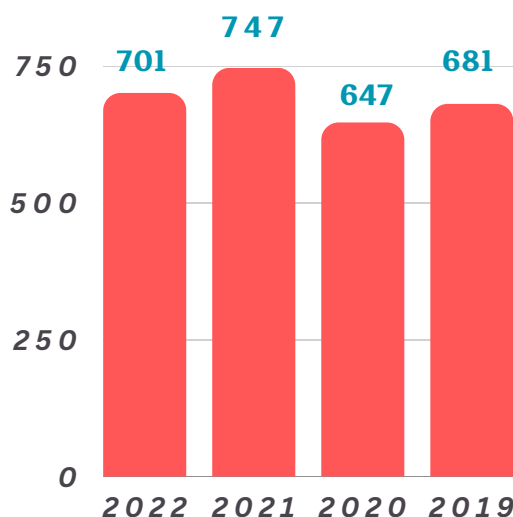
## IAM Research Governance



# RESEARCH METRICS 2022



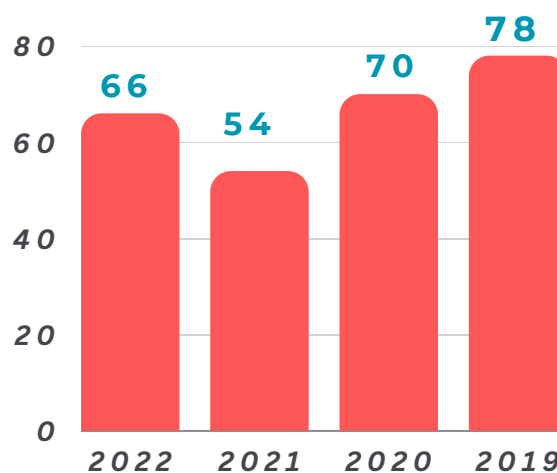
Total number of **annual journal articles** published by the RPA  
Division of Medicine



Annual Journal Articles Published by RPA Medical Departments				
Medical Department	2022	2021	2020	2019
Neurology	121	156	131	119
Cardiology	105	171	153	108
Addiction Medicine	97	119	104	137
AW Morrow Gastroenterology and Liver Centre	69	35	43	58
Respiratory and Sleep Medicine	66	76	43	68
Endocrinology	52	43	51	48
Clinical Haematology	41	9	12	23
Clinical Immunology and Allergy	38	43	13	22
Infectious Diseases	30	20	6	14
Renal	27	26	37	40
Cell and Molecular Therapies	16	11	12	8
Medical Genomics	15	15	17	6
Rheumatology	15	20	22	23
Palliative Care	8	0	3	1
Geriatrics	1	3	0	6
<b>TOTAL</b>	<b>701</b>	<b>747</b>	<b>647</b>	<b>681</b>

*\*The above metrics are self-reported and collated through the SLHD Clinical Research Centre for the annual activity report.*

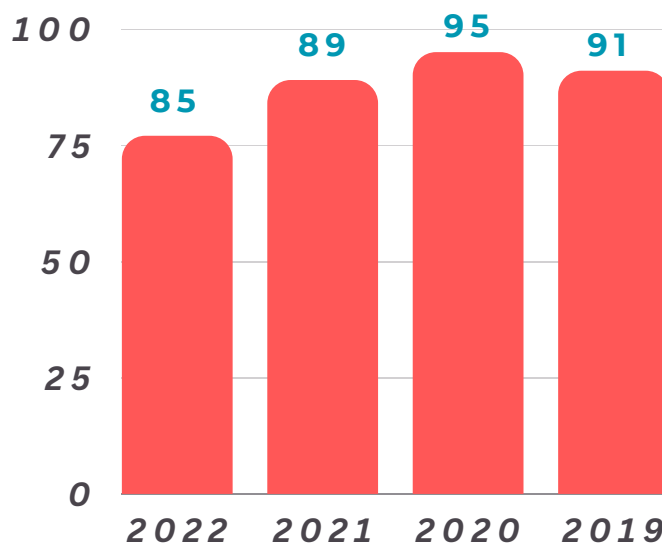
## Total number of **clinical trials** publications for the RPA Division of Medicine



Annual Clinical Trial Articles Published by RPA Medical Departments				
RPA Medical Department	2022	2021	2020	2019
Cardiology	22	11	17	20
Neurology	13	15	17	25
Endocrinology	7	3	12	4
Respiratory and Sleep Medicine	7	7	6	13
Renal	6	3	3	5
Addiction Medicine	4	8	5	5
Clinical Haematology	2	2	4	2
Infectious Diseases	2	0	0	0
Rheumatology	2	3	2	2
Clinical Immunology and Allergy	1	0	2	1
AW Morrow Gastroenterology and Liver Centre	0	2	0	1
Cell and Molecular Therapies	0	0	2	0
Geriatrics	0	0	0	0
Palliative Care	0	0	0	0
Medical Genomics	TBC	0	0	0
<b>TOTAL</b>	<b>66</b>	<b>54</b>	<b>70</b>	<b>78</b>

*\*The above metrics are self-reported and collated through the SLHD Clinical Research Centre for the annual activity report.*

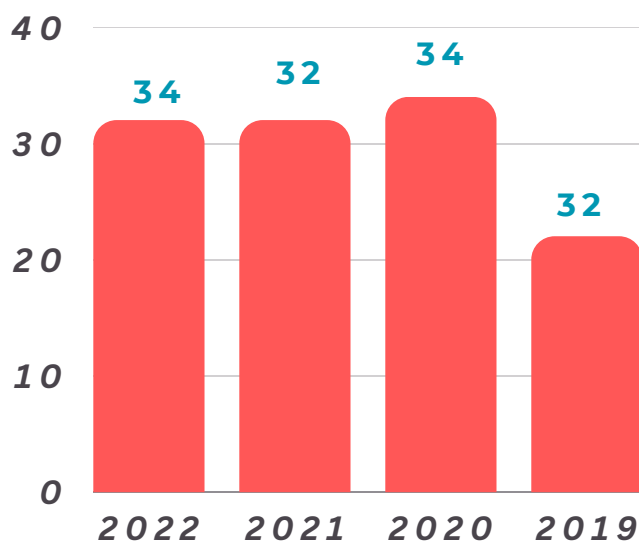
## PhD Students Supervised by Medical Departments by Year



PhD Students by RPA Medical Department				
RPA Medical Department	2022	2021	2020	2019
Addiction Medicine	23	28	22	15
Neurology and Stroke	14	11	20	11
Endocrinology	11	20	13	14
AW Morrow Gastroenterology and Liver Centre	9	0	3	3
Respiratory & Sleep Medicine	8	16	13	13
Cardiology	5	8	17	12
Renal	5	5	5	6
Rheumatology	4	0	0	1
Clinical Immunology & Allergy	3	3	5	11
Clinical Haematology	2	2	2	2
Cell and Molecular Therapies	1	0	0	0
Geriatrics	0	1	0	2
Palliative Care	0	0		0
Infectious Diseases	0	0	0	1
Medical Genomics	TBC	0	0	0
<b>TOTAL</b>	<b>85</b>	<b>89</b>	<b>95</b>	<b>91</b>

*\*The above metrics are self-reported and collated through the SLHD Clinical Research Centre for the annual activity report.*

## Masters Students Supervised by Medical Departments by Year



Masters students by RPA Medical Departments				
RPA Medical Department	2022	2021	2020	2019
Addiction Medicine	15	17	18	9
Endocrinology and Metabolism	4	6	1	3
Respiratory and Sleep Medicine	4	4	2	2
Clinical Haematology	3	3	3	3
Cardiology	2	1	4	1
AW Morrow Gastroenterology and Liver Centre	1	N/A	3	4
Renal	1			0
Rheumatology	1	1	1	0
Palliative Care	1	N/A		0
Clinical Immunology and Allergy	0	0	0	0
Neurology and Stroke	0	0	2	0
Cell and Molecular Therapies	0	0	0	0
Infectious Diseases	N/A	N/A	N/A	N/A
Medical Genomics	TBC	0	0	0
Geriatrics	N/A	0	N/A	
<b>TOTAL</b>	<b>32</b>	<b>32</b>	<b>34</b>	<b>22</b>

*\*The above metrics are self-reported and collated through the SLHD Clinical Research Centre for the annual activity report.*





# ADDICTION MEDICINE, PHARMACOLOGY AND TOXICOLOGY

## Consultant Profile

RPA MEDICAL DEPARTMENT	CONSULTANTS	#
ADDICTION MEDICINE, Pharmacology and Toxicology (AMPT)	<b>Paul Haber</b>	9
	Andrew Dawson	
	<b>Nick Buckley</b>	
	Kate Conigrave	
	Darren Roberts	
	Alicia Foran	
	Anastasia Volovets	
	Nazila Jamshidi	
	Joshua Watt	

*\*Head of Department*

*\*Clinical Academic*

*\*Conjoint Position*

## Research Focus

Primarily clinical and 'big data,' although also includes laboratory research.

## Active Research Programs and Clinical Trials

Clinical Toxicology and Pharmacology

Indigenous Health and Substance Use

Clinical Research in Alcohol, Addictive Behaviours and Treatment

Illicit Drug Use

## Research Output 2022

-**97 publications**

-4 clinical trials publications

## Higher Degrees by Research Students 2022

-23 PhD students

-15 Masters Students



# CARDIOLOGY

## Consultant Profile

RPA MEDICAL DEPARTMENT	CONSULTANTS	#
CARDIOLOGY	Mark Adams	30
	James Weaver	
	Martin Ng	
	Pankaj Jain	
	Sanjay Patel	
	Jordan Fulcher	
	Kim Chan	
	Ray Sy	
	Mark McGuire	
	Caroline Medi	
	Michael Kilborn	
	Lisa Simmons	
	Imre Hunyor	
	Clare Arnott	
	Belinda Gray	
	David Baker	
	Rachael Cordina	
	Raj Puranik	
	Mark Dennis	
	Elizabeth Robertson	
	Jo-Dee Lattimore	
	Ian Wilcox	
	Caroline Medi	
	Michele McGrady	
	David Celermajer	
	Anthony Keech	
	Richmond Jeremy	
	Sean Lal	
	John O'Sullivan	
	Christopher Semsarian	

*\*Head of Department*

*\*Clinical Academic*

## Research Focus

Clinical research, translational research, basic science, public health and implementation science

### Active Research Programs, Clinical Trials and Research Teams

- Pregnancy-associated cardiovascular disease, women and heart disease, spontaneous coronary dissection, preeclampsia and pulmonary hypertension
- Pulmonary hypertension, Echocardiography, atherosclerosis and pulmonary vascular disease, carbon costs of health care, cardiac ultrasound, adult congenital heart disease
- Adult congenital heart disease, exercise
- Genetics of arrhythmia
- Sleep and hypertension
- Metabolics, heart failure
- Aortic diseases
- MRI of the heart
- Treatment strategies for acute coronary syndromes, risk factor reduction in cardiovascular disease, lipids, prevention of vascular disease, microvascular complications of diabetes and underlying Molecular mechanisms
- Acute heart failure
- Acute heart failure, tissue biobanking
- Atheroma and inflammation
- Prevention and management of common chronic conditions (A Patel)
- Genomics and precision medicine, cardiomyopathy investigation and prevention of sudden cardiac death in the youth
- Sports Cardiology
- Cardiogenic shock
- Structure heart disease, bio engineering

### Research Output 2022

- **105 publications**
- 22 clinical trials publications

### Higher Degrees by Research Students 2022

- 5 PhD Students
- 2 Masters Students

# CLINICAL IMMUNOLOGY AND ALLERGY



## Consultant Profile

RPA MEDICAL DEPARTMENT	CONSULTANTS	#
CLINICAL IMMUNOLOGY AND ALLERGY	<b>Stephen Adelstein</b>	<b>11</b>
	Frederick Lee	
	Nicolas Urriola	
	Roger Garsia	
	Lisa Horgan	
	Alice Grey	
	Amruta Trivedi	
	Robert Loblay	
	Isabelle Bosi	
	Shruti Swami	
	Alex Stoyanov	

*\*Head of Department*

## Research Focus

The primary focus of research in the Department of Clinical Immunology and Allergy is the development of novel tests for the diagnosis of immune-mediated disorders including autoimmune conditions, immunodeficiencies and allergic diseases.

## Active Research Programs and Clinical Trials

- Seven active studies

## Research output 2022

- **38 publications**
- 1 clinical trials publication

# ENDOCRINOLOGY



## Consultant Profile

RPA MEDICAL DEPARTMENT	CONSULTANTS	#
ENDOCRINOLOGY	<b>Stephen Twigg</b>	22
	Albert Hsieh	
	Angela Lee	
	Anne Maree Kean	
	Arianne Sweeting	
	Arthur Conigrave	
	Ashish Gargya	
	Eddy Tabet	
	Glynis Ross	
	Ian Caterson	
	Jencia Wong	
	Katrin Kosbab-Jackson	
	<b>Luigi Fontana</b>	
	Namson Lau	
	Nimalie Perera	
	Pamela Jean Ho	
	<b>Samantha Hocking</b>	
	Tania Markovic	
	Ted Wu	
	Timothy Middleton	
	<b>Stephen Colagiuri</b>	
	Xi May Zhen	

*\*Head of Department*

*\*Clinical Academic*

## Research Focus

Clinical trials, translational research and laboratory research of models of disease and biomarkers.

## Active Research Programs

### Diabetes Research

- Diabetes complications
- Diabetes in Pregnancy
- Diabetes technology and health care delivery/models of care
- What was the impact of the COVID 19 pandemic on patients with diabetes?
- Diabetes and special populations

### Thyroid cancer research

### TSH receptor antibody diagnostic testing

### Adrenal insufficiency alert project

### Liver transplant severe osteoporosis quality assurance project

### Glucocorticoid usage in parenteral anti-resorptive therapy

### The Greg Brown Diabetes & Endocrinology Research Laboratory

## Research Output 2022

- **52 publications**

## Higher Degrees by Research Students 2022

- 11 PhD students
- 4 Masters students

## Research Statement

"The RPA Endocrinology Department addresses translational research in metabolic health from bench to bedside, in obesity, diabetes, and in general endocrinology, including thyroid and adrenal conditions, pituitary and metabolic bone health. Clinical trials, investigator driven studies, and laboratory mechanistic and biomarker studies also feature in this process. Medical, nursing and allied health postgraduate higher degree student candidates are encouraged as PhDs and Masters students."

**Professor Stephen Twigg, Head of Department**  
**Head of Central Clinical School, USYD**

# AW MORROW GASTROENTEROLOGY AND LIVER CENTRE



## Consultant Profile

RPA MEDICAL DEPARTMENT	CONSULTANTS	#
GASTROENTEROLOGY AND HEPATOLOGY	<b>Geoff McCaughan</b>	14
	David Koorey	
	Simone Strasser	
	Ken Liu	
	Talal Valliani	
	Peter Lim	
	Gokul Tamilarasan	
	Anastasia Volovets	
	<b>David Bowen</b>	
	Sean Griffin	
	Arthur Kaffes	
	Payal Saxena	
	Kevin Choi	
	Crispin Corte	

*\*Head of Department*

*\*Clinical Academic*

*\*Conjoint Position*

## Research Focus

Laboratory and clinical research. Key achievements including advocating the community in working towards eliminating Hepatitis C by providing better patient care and disease management.

## Active Research Programs

- Hepatology
- Liver Transplant
- Hepatocellular Carcinoma
- Inflammatory Bowel Disease
- Colorectal
- Endoscopy

## Clinical Trials

### Sponsored Clinical trials (18)

- **7** Hepatocellular Carcinoma (HCC)
- **3** Hepatitis B Virus (HBV)
- **1** Primary Biliary Cholangitis (PBC)
- **2** Primary Sclerosing Cholangitis (PSC)
- **4** Inflammatory Bowel Disease (IBD)
- **1** Alcoholic Hepatitis

### Investigator Initiated Clinical Trials (4)

- **1** Liver Cirrhosis
- **3** Inflammatory bowel disease (IBD) Endoscopy

## Research Output 2022

- **69 publications**

## Higher Degrees by Research Students 2022

- 9 PhD students
- 1 Masters student

## Research Statement

"We have a broad range of research into gastrointestinal and liver diseases at the clinical level, work in clinical trials in the fields of inflammatory bowel, interventional endoscopy disease, viral hepatitis, fatty liver diseases, liver transplantation, cirrhosis and hepatocellular cancer dominate our focus. Our basic science work is conducted in the Centenary Institute and in the Charles Perkins Centre at the University of Sydney .

The laboratory program concentrates on the molecular and cellular basis of liver injury, liver cancer and liver immunology. The work is diverse, tackling these issues from many angles that are relevant to all liver diseases.

Our staff (both medical and scientific), continue to be key invited speakers at national and international meetings. I would like to thank our three institutions – **RPA Hospital, the University of Sydney and the Centenary Research Institute** for their continuing support."

**Professor Geoff McCaughan, Head of Department**





# CELL AND MOLECULAR THERAPIES

## Consultant Profile

RPA MEDICAL DEPARTMENT	CONSULTANT	#
CELL AND MOLECULAR THERAPY	John Rasko	1

## Research Focus

Clinical, Scientific, Laboratory, Cell and Gene Therapy, Genomics and Precision Medicine

## Active Research Programs and Clinical Trials

### CMT Active Clinical Trials in Gene Therapy

- Active Trials: 5
- Trials to commence: 3
- Prospective trials: 1

### Active Clinical Trials in other departments being serviced by CMT

- Active Cell Therapy Trials with Haematology: 10
- Prospective Cell Therapy Trials with Haematology: 4
- Active Gene Therapy trials with Neurology: 1
- Active Gene Therapy trials with Gastroenterology-Hepatology: 1

### CMT Projects in Process Development for Use in Future Clinical Trials

- CAR-T cell Therapy for the treatment of Pancreatic Cancer

## Research Output 2022

- 16 publications

## Research Statement

"Since establishment of the Department of Cell & Molecular Therapies in 1999, we have observed cures of genetic diseases in clinical trials of gene therapy for haemophilia A and B, as well as transfusion-dependent beta thalassaemia. Indeed Cell & Molecular Therapies' founding Head of Department was the first staff specialist appointed to a clinical gene therapy role in Australasia.

Through the **RPA-wide Immune Effector Cell Therapy Programme** we have championed curative gene-modified immune cell therapies in leukaemia and lymphoma in NSW. We partner with clinical departments to provide regulatory, manufacturing and compliance leadership for the safe introduction of advanced therapeutic medicinal products that are paradigm changing for previously intractable diseases."

**Professor John Rasko AO, Head of Department**



# GERIATRICS

## Consultant Profile

RPA MEDICAL DEPARTMENT	CONSULTANTS	#
GERIATRICS	Mark Latt	12
	Jennifer Benbow	
	Heike Burnet	
	Leemin Chan	
	Cristina Cristoloveanu	
	Liesl Ischia	
	George Szonyi	
	Scott Murray	
	Natasha Sequeira	
	Rihan Shahab	
	Daniel Simpkins	
	Melanie Wroth	

## Research Focus

Clinical research primarily, with a focus on falls, mobility disorders, delirium, dementia, **continence, polypharmacy and frailty.**

## Research Output 2022

Publication: Chiswell, K., Bein, K., Simpkins, D., Latt, M., Dinh, M. (2022). Emergency department presentations and 30-day mortality in patients from residential aged care facilities. Australian Health Review, 46(4), 414-420.

## Higher Degrees by Research Students 2022

Nil

## Research Statement

"The Department of Geriatric Medicine is engaged in research that examines the major clinical syndromes experienced by older persons in the community: falls, mobility disorders, delirium, dementia, continence, polypharmacy and frailty.

Our research into falls prevention includes multicentre randomised controlled trials of exercise therapy in Parkinson's disease, dementia and mild cognitive impairment.

Our work on incontinence has led to multinational collaborations and an update of the Chapter on **Incontinence in the Frail Elderly (6TH International Consultation on Incontinence)** and participation in an **International Consortium for Health Outcomes Measurement (ICHOM) for Overactive Bladder (OAB)**.

The safe use of medications in older persons is the focus of many of our ongoing studies."

**Associate Professor Mark Latt, Research Lead**

# CLINICAL HAEMATOLOGY



## Consultant Profile

RPA MEDICAL DEPARTMENT	CONSULTANTS	#
CLINICAL HAEMATOLOGY	<b>Phoebe Joy Ho</b>	12
	Christina Brown	
	Christian Bryant	
	Scott Dunkley	
	Edward Abadir	
	Harry Iland	
	Liane Khoo	
	Stephen Larsen	
	Derek McCulloch	
	<b>Freda Passam</b>	
	Vinay Vanguru	

*\*Head of Department*

*\*Clinical Academic*

*\*Conjoint Position*

## Research Focus

Laboratory and Clinical Research. Clinical Haematology is a national clinical research leader in RPA investigator-initiated trials, novel immunotherapy trials, patient-reported outcomes and symptom research. Recent major interests include cellular immunotherapy (CAR-T and CAR-NK) trials, bi-specific antibodies, novel molecules targeting cell signalling in the treatment of cancer, as well as gene therapy trials in thalassemia and haemophilia.

Our laboratory research investigates the immunological and genetic pathophysiology of haematological cancer utilising state-of-the art methodologies including mass cytometry, next generation flow cytometry and massive parallel sequencing. We also have an extensive laboratory program on platelet pathophysiology and thrombosis.

## Active Research Programs and Clinical Trials

Total Number of Trials **49**, including:

- **9** Gene Therapy/CAR-T studies
- **6** Haemophilia
- **14** Myeloma
- **5** Leukaemia
- **8** Lymphoma
- **3** Thalassaemia
- **3** Other
- **3** Registries

**Research Team** of **13.0FTE** in the Haematology Clinical Trials Unit.

## Research Output 2022

- **41 publications**
- 2 clinical trial publications

## Higher Degrees by Research Students 2022

- 2 PhD students
- 3 Masters students

## Research Statement

"Clinical Haematology focusses on state-of-the art clinical trials including RPA investigator-initiated trials, with recent major interests including cellular immunotherapy (CAR-T and CAR-NK), bi-specific antibodies, and novel molecules targeting cell signalling in the treatment of cancer, as well as gene therapy trials in thalassemia and haemophilia. We also focus on patient well-being being a leader in patient-reported outcomes research. Our laboratory research investigates the immunological and genetic pathophysiology of haematological cancer, concentrating on myeloma and leukemia, as well as thrombosis and the role of platelets in health and disease."

**Professor Joy Ho, Head of Department**



# INFECTIOUS DISEASES AND MICROBIOLOGY

## Consultant Profile

RPA MEDICAL DEPARTMENT	CONSULTANTS	#
INFECTIOUS DISEASES AND MICROBIOLOGY	Rebecca Davis	11
	Sebastian Van Hal	
	Amrita Ronnachit	
	Simeon Crawford	
	Susan Harch	
	Tina Marinelli	
	Feras Mirdad	
	Andie Lee	
	Blake Nield	
	Jeffrey Masters	
	Nila Dharan	

## Research Focus

Laboratory and Clinical Research Focus

## Active Research Programs and Clinical Trials

- Seven in total

## Research Output 2022

-30 publications

-2 clinical trials publications

# MEDICAL GENOMICS



## Consultant Profile

RPA MEDICAL DEPARTMENT	CONSULTANTS	#
MEDICAL GENOMICS	Ronald Trent	6
	Lisa Worgan	
	Felicity Collins	
	Amali Mallawaarachchi	
	Anthony Cheong	
	Lan Nguyen	

*\*Head of Department*

## Research Focus

Both clinical and laboratory research in genomics.

## Active Research Programs and Clinical Trials

**Clinical** – Renal genetics; other ad hoc involvement in clinical studies e.g. Marfans

**Laboratory** – Familiar hypercholesterolaemia; Triplet Repeat Expansions in neurogenetic disorders and other ad hoc involvement in laboratory studies e.g. Long Read DNA sequencing.

## Research activity output

999 samples for diagnostic reporting by the Somatic Cell team, led by A/Prof Bing Yu at RPA Hospital.

Four virtual workshops

Five SLHD staff completed the IPM&B Research Mentorship program

718 referrals for the Clinical Genetics Service



## Research Statement

"The Department of Medical Genomics is administered by NSW Health Pathology and works very closely with the SLHD via the Institute of Precision Medicine & Bioinformatics. Its primary focus is clinical care via genomic and genetic DNA testing. An important achievement in 2022-23 was to transition from small panel testing to large virtual panels derived from a whole exome sequencing backbone together with the Molecular Medicine Laboratory in CRGH, this service has grown to include neurogenetics and many other clinical disorders. I am grateful to Dr Anthony Cheong and his enthusiastic helpers for this change which enables the Department to provide a comprehensive genomics service that is well placed to expand into whole genome sequencing when this is required.

Assoc Prof Bing Yu, who is the Principal Hospital Scientist in charge of the somatic cell DNA testing laboratory, has continued to roll out new initiatives in precision cancer with recently a **NATA accredited cfDNA** testing service using tumour-derived DNA isolated from patients' blood samples. There are more impressive precision cancer developments under way and these will ultimately lead to real time monitoring of patients to measure response to treatment, and detect early signs of relapse should it occur.

Prof Yu's laboratory is jointly funded by **NSW Health Pathology** and the SLHD. The Department's long-standing collaboration with the RPA Department of Clinical Chemistry continues to grow with input into clinical care in the hypercholesterolaemia disorders, and contributing to change from traditional biochemical testing to more contemporary molecular DNA based technologies."

**Professor Ronald Trent, Head of Department**  
**Director, Institute of Precision Medicine and Bioinformatics**

# NEUROLOGY



## Consultant Profile

RPA MEDICAL DEPARTMENT	CONSULTANTS	#
NEUROLOGY	<b>Armin Nikpour</b>	16
	<b>Matthew Kiernan</b>	
	<b>Michael Barnett</b>	
	Craig Anderson	
	Heidi Beadnall	
	John Worthington	
	Judith Spies	
	Kaitlyn Parratt	
	Leo Davies	
	Michael Halmagyi	
	Miriam Welgampola	
	Rebekah Ahmed	
	Stacey Jankelowitz	
	Stephen Winters	
	Timothy Ang	
	Toh Hock Wong	

*\*Head of Department*

*\*Clinical Academic*

## Research Focus

Mainly clinical research with an emphasis on neurophysiology.

## Active Research Programs and Clinical Trials

Includes both pharma and research projects

Clinical trials include MND, Stroke, Epilepsy, Multiple sclerosis, Dementia and hearing and balance disorders.

**Stroke:**

Approved by ethics: 6

Pending ethics approval: 3

MS: 3

Epilepsy: 3

Memory and Cognition Clinic: 4

MND: 8

## **Research Activity Output 2022**

**-121 publications**

-13 clinical trials publications

## **Higher Degrees by Research Students**

- 14 PhD students
- 1 Masters student

# PALLIATIVE CARE



## Consultant Profile

RPA MEDICAL DEPARTMENT	CONSULTANTS	#
PALLIATIVE CARE	<i>Anthoulla Mohamudally</i>	8
	Lynn Lim	
	Riona Pais	
	Corey Lau	
	Maria Cigolini	
	Alix Dumitrescu	
	In Sun Moon	
	Maryse Sophie Irvine	

*\*Head of Department*

## Research Focus

Clinical Research primarily.

## Active Research Programs and Clinical Trials

- SLHD Bereavement Project – data analysis
- Primary objective To understand the bereavement experience of people bereaved following a death in the care of SLHD.
- 5 projects

## Research Activity Output 2022

- 8 Publications

## Higher Degrees by Research Students

- 1 Masters student

## Research Statement

"In addition to the current active research programs, RPA's Department of Palliative Care continues to be involved in the Palliative Care Clinical Studies Collaborative (PaCCSC) and its related international program **Improving Palliative, Aged and Chronic Care through Clinical Research and Translation (IMPACCT)**. We have contributed data to the IMPACCT Rapid Program that studies the prospective use of medicines and non-pharmacological interventions commonly used in Palliative Care.

Our strengths are in multidisciplinary research and research in all domains of holistic care - physical, social, psychological and spiritual - to drive improvements in quality of life for patients and families/carers facing life-limiting illness."

**Dr Anthoulla Mohamudally , Head of Department**

# RENAL MEDICINE



## Consultant Profile

RPA MEDICAL DEPARTMENT	CONSULTANTS	#
RENAL MEDICINE	<b>Steve Chadban</b>	9
	Kate Wyburn	
	David Gracey	
	Leyla Aouad	
	Paul Snelling	
	Patrick Lam	
	Erin Vaughan	
	John Saunders	
	Tracey Yin (mat leave)	

*\*Head of Department*

## Research Focus

- Clinical Trials in Transplantation, dialysis, renal supportive care and CKD, plus an active basic science lab (innate immunity and microbiome in kidney disease) and epidemiology group based within the Kidney Node, CPC.
- The Renal Department focuses on the epidemiology and burden of CKD and ESKD, discovery of new targets with therapeutic potential (innate immunity and microbiome in CKD and transplantation), translation of basic science into clinical care (gut microbiome in CKD and transplant), and randomised clinical trials in CKD and transplantation (eg. BEST Fluids, Lancet 2023)
- Sex and gender disparity in kidney disease is an increasing area of focus. The ACE Pathway, an initiative of the Department led by our lead Clinical Trials Nurse, Ellen Yeo, has been established and seeks to provide a familiarisation and orientation pathway, leading through a series of training modules to a provide prospective clinical trials nurses with access to a regular craft group meeting within RPA, structured training that will generate Diploma and Masters qualifications via University of Sydney, and a genuine career pathway. Clinical Trials Nurses are key stakeholders and critical members of our research teams across RPA and support for them is a key priority.

## Active Research Programs and Clinical Trials

-11 active studies and clinical trials

## Research Activity Output 2022

**27 publications**

## Higher Degrees by Research Students

- 5 PhD students
- 1 Masters student

## Research Statement

"The Department of Renal Medicine RPA undertakes research across a spectrum from epidemiology, health economics and modelling and clinical trials through to basic science research. Our research is conducted across RPA, The Kidney Centre at RPA, and The Kidney Node, Charles Perkins Centre, University of Sydney and the newly founded AIM at RPA. **We firmly believe that research:**

**1. Is everyone's business**

**2. Contributes to evidence-based care and improved outcomes for patients**

**3. Should be embedded within every-day clinical practice** and included within our workloads, not as an optional add on

**4. Should address issues important to patients**, capture outcomes relevant to patients and be conducted using studies that are co-designed or at least approved of by patients

Our work is primarily driven by clinician-researchers from medical and nursing backgrounds, in collaboration with our administrative and allied health teams, plus external collaborators

We seek to conduct research to enable our patients access to best available evidence-based practice and the innovations and therapies, seeking to improve the lives and outcomes of patients, carers and families affected by kidney disease."

**Professor Steve Chadban, Head of Department**

# RESPIRATORY AND SLEEP MEDICINE



## Consultant Profile

RPA MEDICAL DEPARTMENT	CONSULTANTS	#
RESPIRATORY AND SLEEP MEDICINE	<b>Paul Torzillo</b>	26 (14 with admitting rights, 12 on sessional VMO appointments for outpatient clinics)
	David Barnes	
	Stephen McNamara	
	Brendon Yee	
	Keith Wong	
	Tamera Corte	
	Edmund Lau	
	Lauren Troy	
	<b>Greg Fox</b>	
	Helen Jo	
	Sheila Sivam	
	Simone Visser	
	Alan Teoh	
	Sabine Zimmermann	
	Helen Reddel (VMO)	
	Kwok Yan (VMO)	
	Veronica Yozghatlian (VMO)	
	Michael Dodd (VMO)	
	Malcolm Ogborn (VMO)	
	Emma Gray (VMO)	
	Laura Glenn (VMO)	
	Anna McLean (VMO)	
	Aruvi Thiruvarduchelvan (VMO)	
	Adelle Jee (VMO)	
	Yasmin Al Hindawi (VMO)	
	Ben Nguyen (VMO)	

**\*Head of Department**

**\*Clinical Academic**

## Research Focus

Members of the Respiratory and Sleep Medicine department are involved in the full spectrum of research from discovery science to translation and implementation. Research is an integral component of clinical care and patients are referred from around the state to access clinical trial participation through quaternary-level specialist clinics. The multidisciplinary research team include medical, nursing, allied health, and respiratory scientist staff.



The department clinical research program spans many disease areas: interstitial lung disease, pulmonary hypertension, cystic fibrosis, tuberculosis, lung cancer, bronchiectasis, and asthma. Members of sub-specialty teams collaborate with national and international researchers through investigator-initiated research and industry sponsored clinical trials. Many in the department have international reputations for being leaders in their respective fields, with recognition through clinical guideline participation, scientific prizes, international conference presentations and competitive grant awards.

## Active Research Programs and Clinical Trials

- 15 Interstitial Lung disease (ILD) Trials
- Cystic Fibrosis (CF) - 2 active trials, 1 upcoming, 1 recommencing and 1 potential
- 5 Pulmonary Hypertension Trials

## External research supervision

- 9 external PhD candidates
- 2 external masters students
- 1 post-doctoral fellow (ILD)
- 1 self-funded visiting fellow (ILD)
- 6 members of CRE-Pulmonary Fibrosis research team

## Research Activity Output 2022

- 66 publications and 7 clinical trials publications (CRC data)
- (98 on IAM audit)

## Higher Degrees by Research Students

- 17 PhD students
- 5 Masters students

# RHEUMATOLOGY



## Consultant Profile

RPA MEDICAL DEPARTMENT	CONSULTANTS	#
RHEUMATOLOGY	<b>Matthew Parker</b>	9
	Bethan Richards	
	Peter Youssef	
	Neil McGill	
	Jan Vaile	
	Christopher Needs	
	Michael Spies	
	Angela Fu	
	Shikta Day	

*\*Head of Department*

## Research Focus

Primarily clinical research.

## Active Research Programs and Clinical Trials

- Two active studies

## Research Activity Output 2022

-15 publications

-2 clinical trials publications

## Higher Degrees by Research Students

- 4 PhD students
- 1 Masters student

# FUTURE DIRECTION



## **The IAM Advanced Trainee Research Education Series**

The IAM was officially established in March 2023 and launched its pilot Advanced Trainee Research Education Series in June 2023. This series focuses on the specific research support needs of AT's including data analysis, ethics applications and study design. It features various RPA research leaders and experts and is open for other interested research trainees across the nursing, allied health and corporate disciplines.

## **Establishing the Bi-Monthly IAM Research and Innovation Forum**

The IAM Research and Innovation Forum will launch in the second half of 2023 to support the research efforts of early career researchers within the Division of Medicine. The forum is charged with identifying universal research themes, facilitating collaborations, addressing systematic barriers and understanding how best the IAM can advocate on behalf of the Division to increase academic productivity.

## **Appointing Department Research Leads**

The IAM is establishing research lead positions to connect disciplines across the Division, facilitate and promote research within departments, act as the communication and liaison point for the IAM and engage in various IAM research programs.

## **Development of the RPA and SLHD Research Themes**

The IAM has consulted extensively across the Division, Clinical Streams and affiliate SLHD Research Institutes to develop seven thematic research areas across RPA in contribution to the extensive planning for the Sydney Biomedical Accelerator.

## **Inclusion of additional specialties into the Division of Medicine**

Moving forward, RPA Dermatology and Rehabilitation Medicine will be incorporated into the annual capture of research metrics. The IAM leadership teams look forward to working closely with Professor Diona Damian, Head of Dermatology RPA and Dr Ali Tahayori, Head of Rehabilitation Medicine on research and innovation initiatives.

