

Sydney Institute for  
Women, Children  
and their Families

# 2022 Annual Report



**SYDNEY INSTITUTE FOR  
women, children  
and their families**



**Sydney  
Local Health District**

# Contents

<b>03</b>	Year in review
<b>04</b>	Foreword
<b>05</b>	Vision and purpose
<b>06</b>	Governance
<b>09</b>	Staff and operations
<b>12</b>	Affiliates
<b>15</b>	Research and education
<b>22</b>	Events
<b>25</b>	Communications

# Year in review

The Sydney Institute for Women, Children and their Families (the Institute) has continued to grow in the 2022 calendar year. Our Affiliate Network has increased and we are reporting more publications, successful grants, Institute events and research activities than ever before. Here is a snapshot of the key metrics indicating our growth since 2021:

1 additional **newsletter**

6 additional **events**

52 new **affiliates**

127 new **Twitter followers**

21 additional **publications authored by affiliates**

17 additional **Higher Degree Research candidates supervised**

4 new Institute **staff members**

15 more **grants received** within the Affiliate Network

## Foreword

We are delighted to present the 2022 Annual Report for the Sydney Institute for Women, Children and their Families (the Institute). This Report presents research activity during the period of March 2021 to April 2022, and Institute activity throughout the 2022 calendar year.

In 2022, the Institute had significant growth in a number of areas. We have continued to work to position the Institute as a prominent hub supporting research, education and policy related to women, children and their families within Sydney Local Health District (the District) and across Sydney.

This year the Institute has established an Advisory Council, increased our Institute Management Group membership, grown our Affiliate Network and enhanced our staffing profile. We are committed to our vision of maximising lifelong health and social wellbeing for women, children and their families through research, education, and policy, and we have developed, delivered and supported a large number of research and education programs across our Network.

This Report demonstrates our strong connection with the Institute Affiliate Network and showcases the exceptional research and education happening in the space of women, children and their families. The Report provides an overview of the Institute's growth, initiatives and activities in the 2022 calendar year.



Dr George Johnson  
Director, Sydney Institute for Women, Children and their Families  
General Manager, Public Health, Sydney Local Health District

# Vision

The Sydney Institute for Women, Children and their Families (the Institute) has a vision to maximise lifelong health, wellbeing and opportunities for women, children and their families through education, research and innovation.

Our vision is to be internationally-recognised as a leading centre of education, policy, research and innovation in the pursuit of lifelong health and wellbeing.

The Institute is focused on rapid translation of research into practice and is committed to discovering, developing, defining and distributing the best evidence-based practice and policy to shape models of care, service design and system transformation.

The Institute is a knowledge broker with a record of engaging and inspiring clinicians, researchers, policymakers and the wider community to improve health and wellbeing outcomes for women, children and their families across life stages and places.

# Purpose

The Institute is a central hub for research, evaluation, education and policy centred on, and related to, the health and social wellbeing of women, children and their families.

The Institute facilitates collaborative, multidisciplinary research across Sydney Local Health District and our partner institutions across the Sydney Innovation Precinct for Health Education Research (SIPfHER) and government and non-government agencies.

Our members share resources, information, concepts and values, and work together to build the capacity of our clinicians, researchers and community health professionals to empower women, children and their families to take control of their health.



# Governance



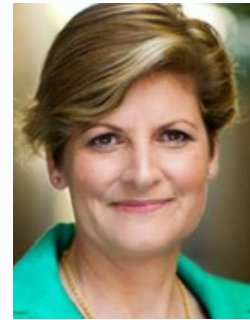
# Sydney Institute for Women, Children and their Families Advisory Council



**Professor Stephen Simpson AC (Chair)**  
Academic Director  
Charles Perkins  
Centre  
Professor School of  
Life and  
Environmental  
Sciences  
The University of  
Sydney



**Dr Teresa Anderson AM**  
Chief Executive  
Sydney Local  
Health District



**Ms Laila Hallam**  
Chair  
Consumer  
Advisory Council  
Clinical Excellence  
Commission  
Agency for Clinical  
Innovation



**Adjunct Professor Frank Tracey**  
Chief Executive  
Children's Health  
Queensland  
Hospital and  
Health Service



**Ms Catherine Taylor**  
Consumer  
Representative  
Sydney Local  
Health District



**Professor Joshua Burns**  
Head of School and  
Dean  
Sydney School of  
Health Sciences  
The University of  
Sydney



**Professor Donna Waters**  
Deputy Executive  
Dean  
Faculty of Medicine  
and Health  
The University of  
Sydney



**Emeritus Professor Richard Henry AM**  
Director  
Children's Cancer  
Institute



**Professor Martha Hickey**  
Director  
Women's  
Gynaecology  
Research Centre  
Royal Women's  
Hospital



**Ms Tish Bruce**  
Executive  
Director  
Health and Social  
Policy  
NSW Ministry of  
Health



**Professor Don Nutbeam**  
Professor of Public  
Health School of  
Public Health  
The University of  
Sydney  
Executive Director  
Sydney Health  
Partners



**Professor Jonathan Carapetis AM**  
Professor  
University of  
Western Australia  
Medical School  
Executive Director  
Telethon Kids  
Institute Perth



**Scientia Professor Mark Harris**  
Executive Director  
Centre for Primary  
Health Care and  
Equity  
University of New  
South Wales



**Mr Michael Tidball**  
Secretary  
NSW Department of  
Communities and  
Justice



**Ms Linda Tucker**  
Solicitor  
Redfern Legal  
Centre



# Sydney Institute for Women, Children and their Families Management Group



**Dr George Johnson**  
**Institute Director**  
Director  
Sydney Institute for Women,  
Children and their Families  
General Manager  
Public Health  
Sydney Local Health District



**Ms Katie Perren**  
**Management Group Secretariat**  
Deputy Director  
Sydney Institute for Women,  
Children and their Families



**Professor Jonathan Carter**  
**Institute Clinical Executive Sponsor**  
Clinical Director  
Women's Health, Neonatology &  
Paediatrics  
Sydney Local Health District  
Conjoint Professor  
The University of Sydney



**Professor Adrienne Gordon**  
**Institute Co-Chair**  
Senior Staff Specialist  
Neonatologist  
Royal Prince Alfred Hospital  
Clinical Professor, Discipline of  
Obstetrics, Gynaecology and  
Neonatology  
The University of Sydney



**Professor Sue Woolfenden**  
**Institute Co-Chair**  
Director  
Community Paediatrics  
Sydney Local Health District  
Professor of Community Paediatrics  
The University of Sydney



**Professor John Eastwood**  
**Institute Emeritus Co-Chair**  
Executive Clinical Advisor  
Clinical Services Integration and  
Population Health  
Sydney Local Health District  
Medical Officer of Health and  
Acting Chief Medical Officer  
Southern District Health Board  
New Zealand



**Professor Jon Hyett**  
**Institute Emeritus Co-Chair**  
Professor of Obstetrics and  
Gynaecology  
Western Sydney University  
South Western Sydney Local  
Health District



**Ms Lou-Anne Blunden**  
**Institute Executive Sponsor**  
Executive Director  
Clinical Services Integration  
and Population Health  
Sydney Local Health District



**Professor Sameer Bhole AM**  
**Institute Management Group Member**  
Clinical Director  
Oral Health and Sydney Dental  
Hospital  
Sydney Local Health District  
Clinical Professor  
Sydney Dental School  
The University of Sydney



**Ms Dianna Jagers**  
**Institute Management Group Member**  
General Manager  
Community Health Services  
Sydney Local Health District



# Staff and operations



# Staff

The Sydney Institute for Women, Children and their Families (the Institute) team has grown during the 2022 calendar year. A number of new positions were established, including a Database Manager, a Grants and Partnerships Officer, and a Senior Research and Project Officer. An Interim Deputy Director was also appointed to support the growing team. These staffing changes saw the Institute's team grow from three members (at the end of 2021) to eight members by the end of 2022.

**72%** increase in staffing profile in 2022

## Positions in 2021

Institute Director  
0.4 FTE



LifeLab Program Manager  
1.0 FTE



Senior Research and  
Project Officer  
1.0 FTE



Senior Research Officer  
0.4 FTE



## New positions in 2022

Interim Deputy Director  
1.0 FTE



Senior Research and Project  
Officer  
0.6 FTE



Database Manager  
1.0 FTE



Grants and Partnerships  
Officer  
0.6 FTE



# Operations

The Sydney Institute for Women, Children and their Families (the Institute) provides a wide variety of research support services to its Affiliate Network. Our support services enable and drive research, and create and foster a collaborative research environment to help build research capacity across Sydney Local Health District and our Affiliate Network. Throughout 2022, the Institute continued to deliver a wide range of support services, and enhanced our suite of services with the launch of **three new offerings**:

## New services in 2022

### Institute Seed Funding Program

The seed funding grant program received **31 applications**, with nine finalists invited to present at the X-Factor event, and **\$90,000 awarded across four projects**.

### Institute Mentorship Program

The Institute Mentorship Program was launched in September 2022, with **10 pairs of mentees and mentors** signed up for a six month program.

### Research Networking Meetings

The Institute invited affiliates to attend research networking meetings in 2022, **bringing together 20 affiliates** across two meetings.

## Services continued in 2022

- Early to mid-career researcher support, through partnership with the Charles Perkins Centre at the The University of Sydney.
- Educational webinars focusing on the First 2000 Days, health policy and research that provide affiliates with the latest updates in these areas.
- Institute student placement program for Masters of Public Health candidates to support affiliate research.
- Administrative and business support for researchers including assistance with grant applications.
- Distribution and promotion of research news, updates and achievements to the Affiliate Network.

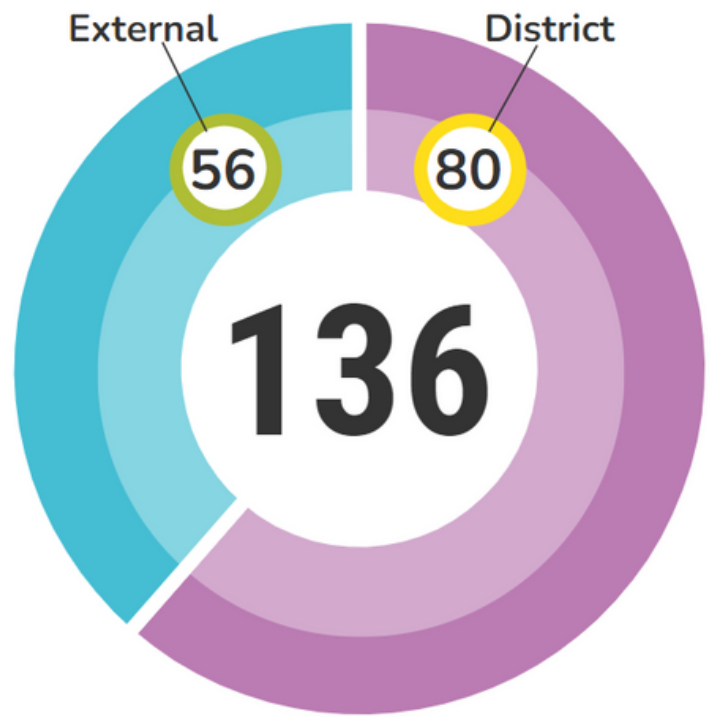
# Affiliates



# Affiliate Network

The Sydney Institute for Women, Children and their Families (the Institute) Affiliate Network has grown exponentially since the process of formalising affiliation began in 2020. The Network continued to grow in 2022. Affiliates represent a broad range of disciplines and professional backgrounds.

At the time of reporting, the Institute had a total of 136 affiliates. Between 2021 and 2022, the Affiliate Network membership has almost doubled.

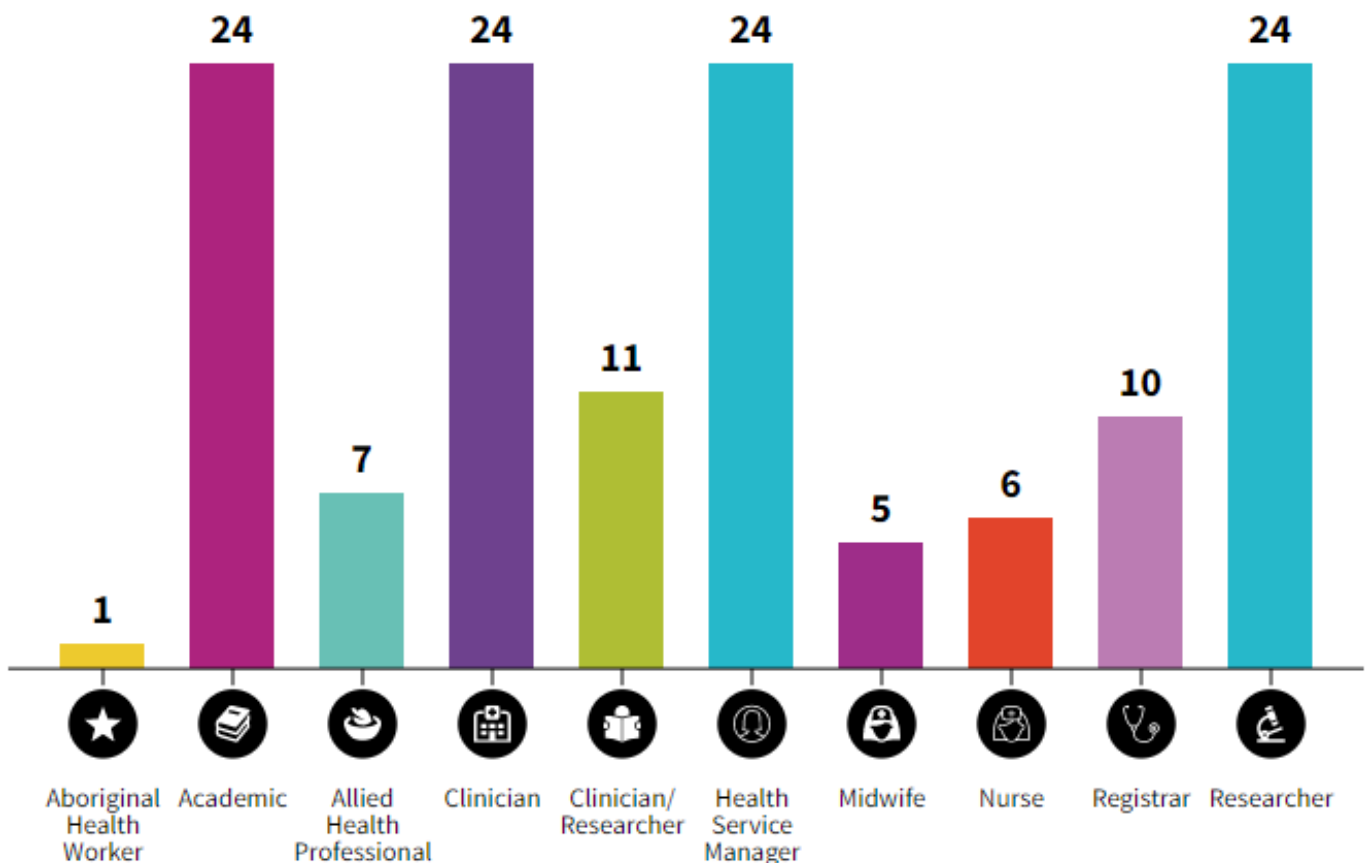


↑ Up by **62%** since 2021

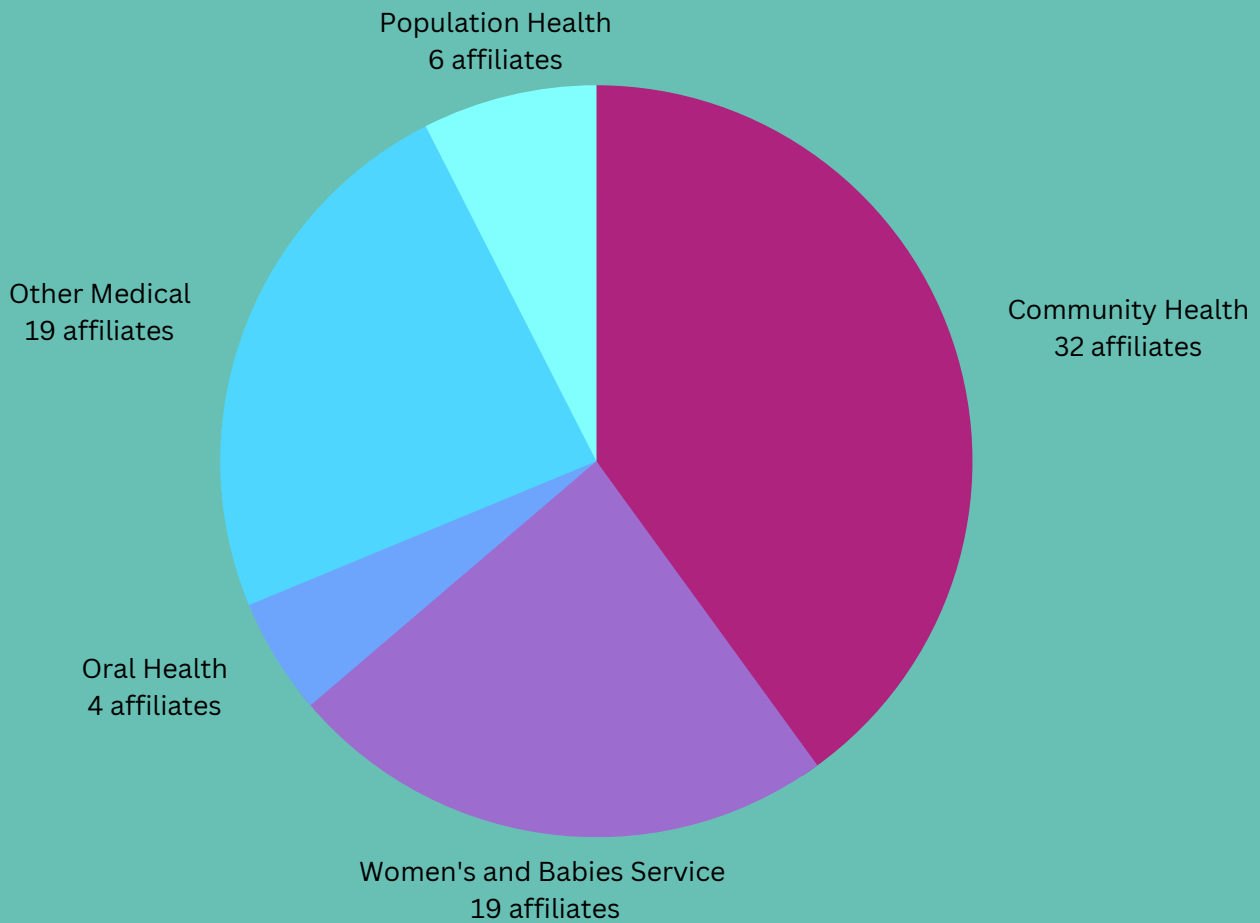
**District** affiliates include members who have a Sydney Local Health District appointment.

**External** affiliates include members who do not have a Sydney Local Health District appointment.

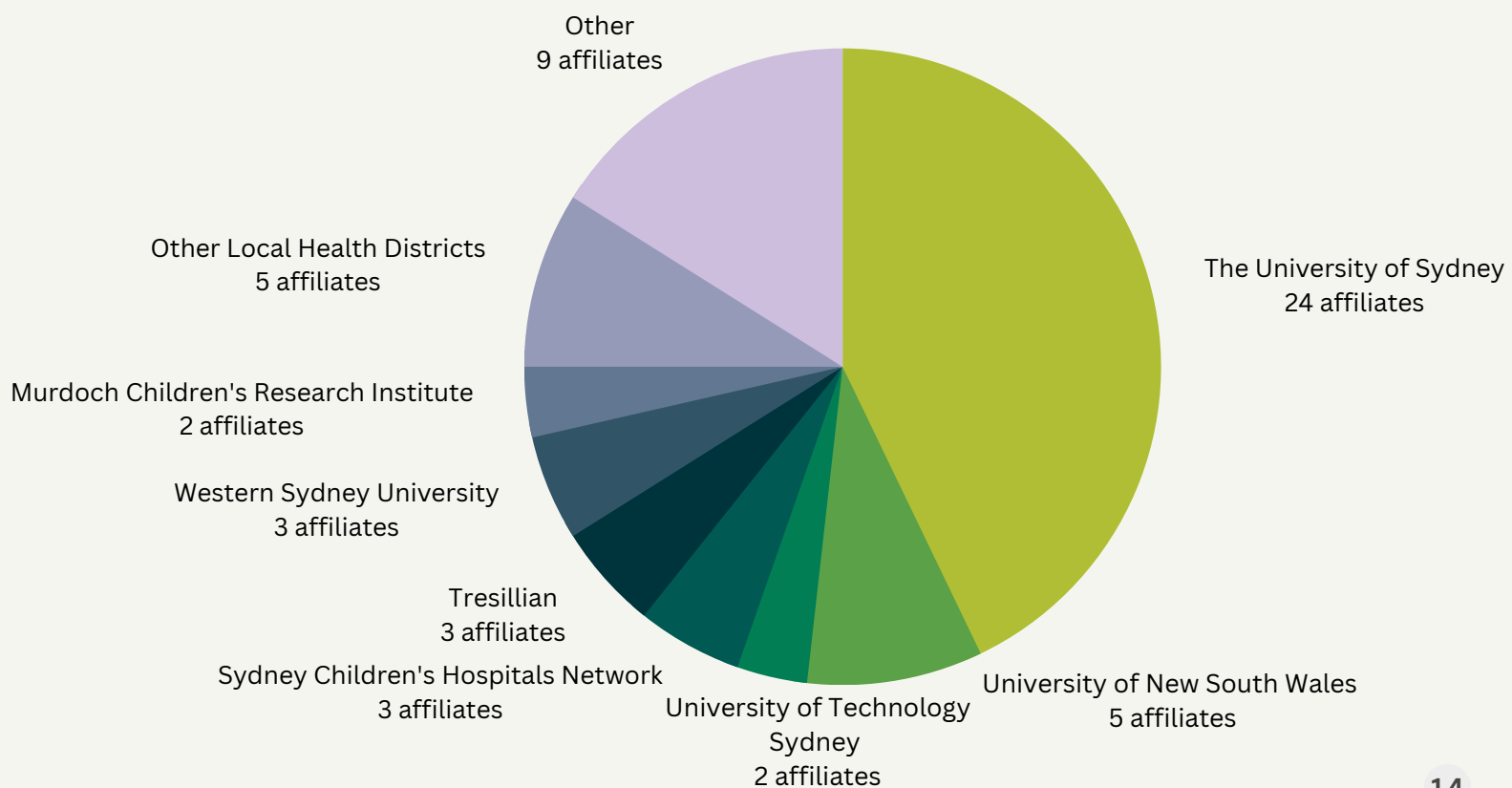
## Affiliates by primary profession



# District affiliates by department



# External affiliates by organisation





# Research and education



# Research

The Sydney Institute for Women, Children and their Families (the Institute) reports on publications, presentations, book chapters, grants, awards, ethics applications, trials and Higher Degree Research candidate supervision.

The reporting period of **March 2021 to April 2022** saw significant research activity and academic contributions across the Affiliate Network. The exceptional research output from our affiliates is highlighted here and includes affiliates who provided confirmation of their research activity and achievements for this period.

# Publications

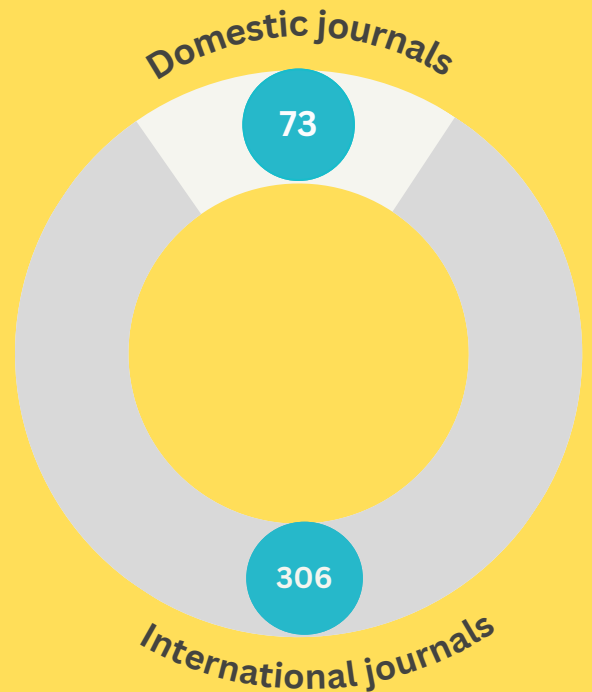
In the previous reporting period January 2020 to April 2021, more publications were reported by external affiliates than District affiliates.

However, in the latest reporting period March 2021 to April 2022, District affiliates reported more publications than external affiliates. This is likely to be a reflection of the increase in District affiliate members in this reporting period.

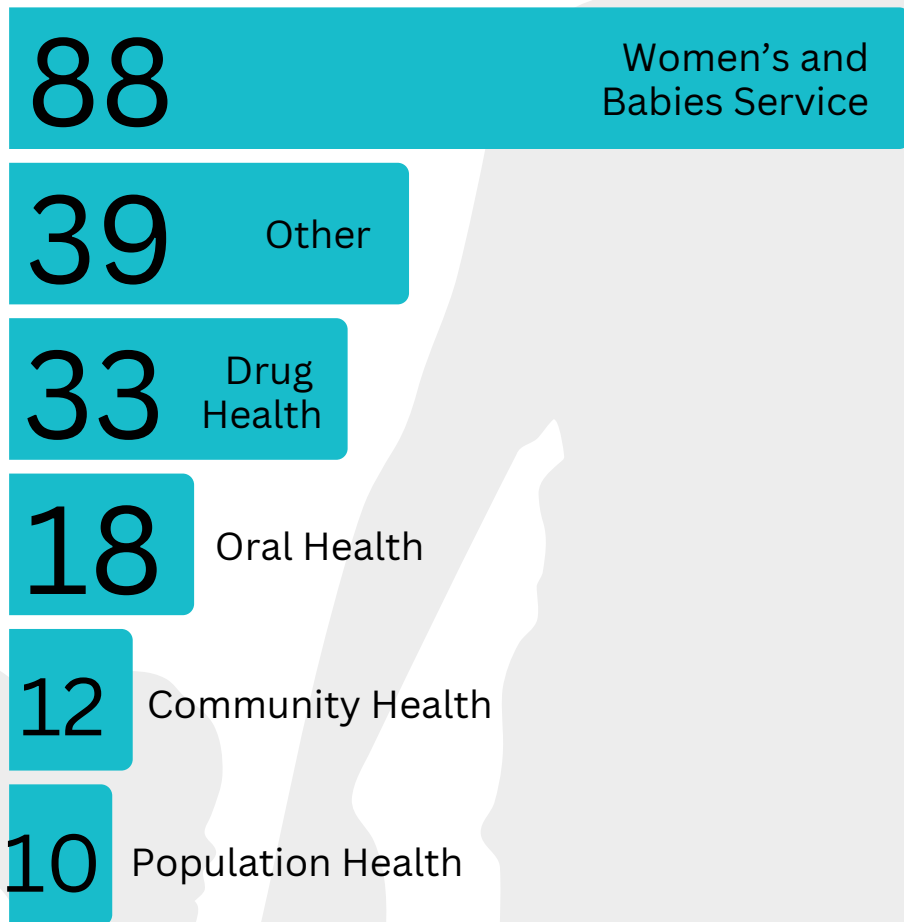
## Total publications 2021/22



**5% increase**  
in the total number of publications from 2021 to 2022.



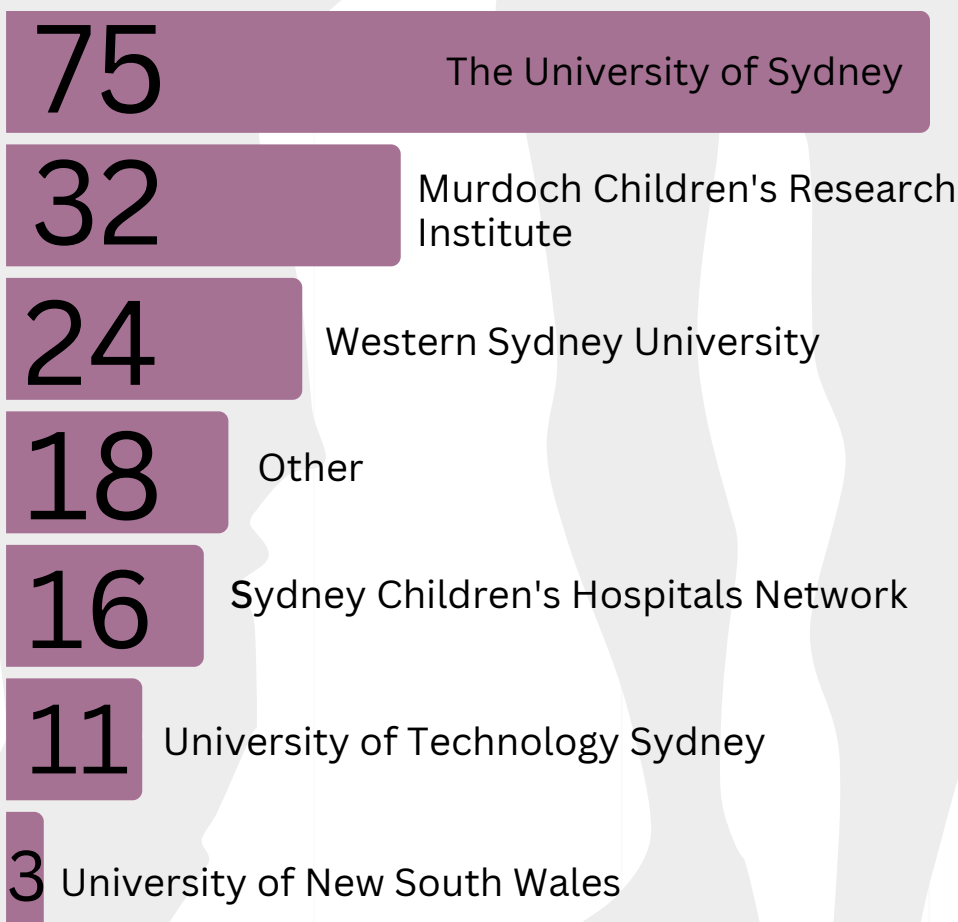
# Publications by service / organisation



## District affiliate

### publications

Sydney Institute for Women, Children and their Families (the Institute) affiliates from the District's Women's and Babies Service reported the most publications in this reporting period.



## External affiliate

### publications

Institute affiliates from The University of Sydney reported the most publications in this reporting period.

# Presentations

101

District affiliate presentations

59

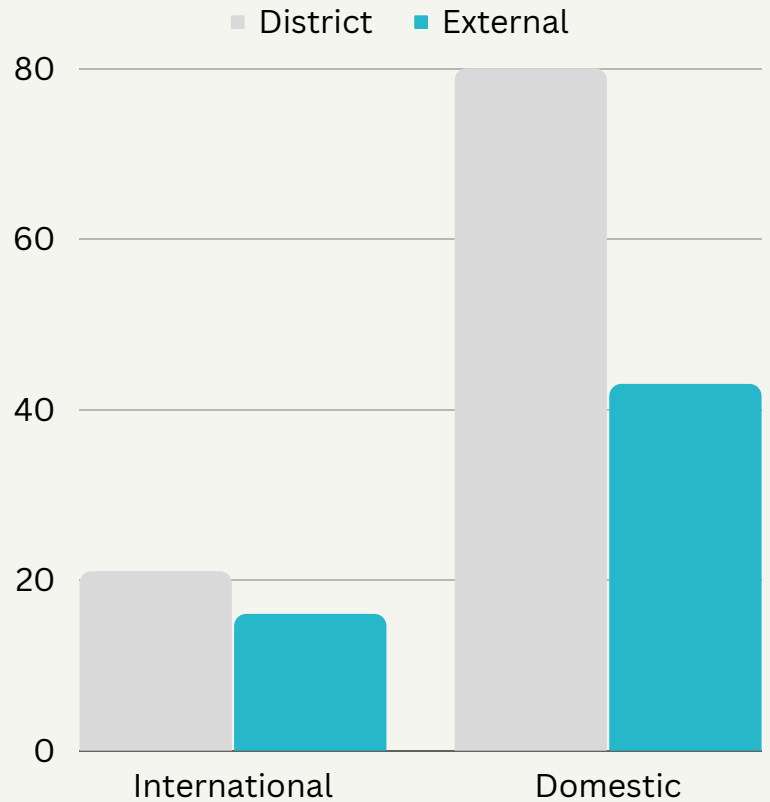
External affiliate presentations

160

Total presentations

**90% increase** in the number of total presentations from 2021 to 2022.

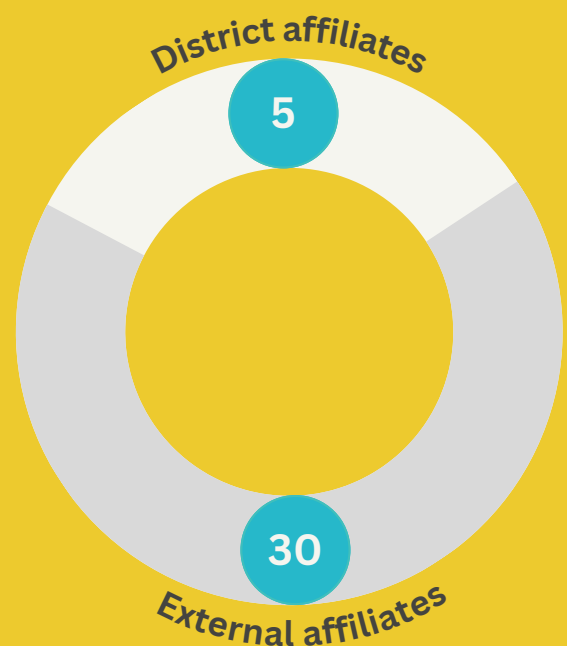
Type of presentations reported



# Book chapters

Sydney Institute for Women, Children and their Families (the Institute) affiliates wrote **35 book chapters** in 2022, with the majority written by external affiliates.

**60% increase** in the number of total book chapters written from 2021 to 2022.



# Grants

There were **68 grants awarded** to the Sydney Institute for Women, Children and their Families (the Institute) Affiliate Network in this reporting period, totaling **\$79 million dollars**. This is an increase on the 53 awarded grants in the 2021 research reporting period, which totaled \$34 million dollars.

**Grants to the value of \$79 million were awarded to affiliates in 2022 reporting period.**

**\$58 million**

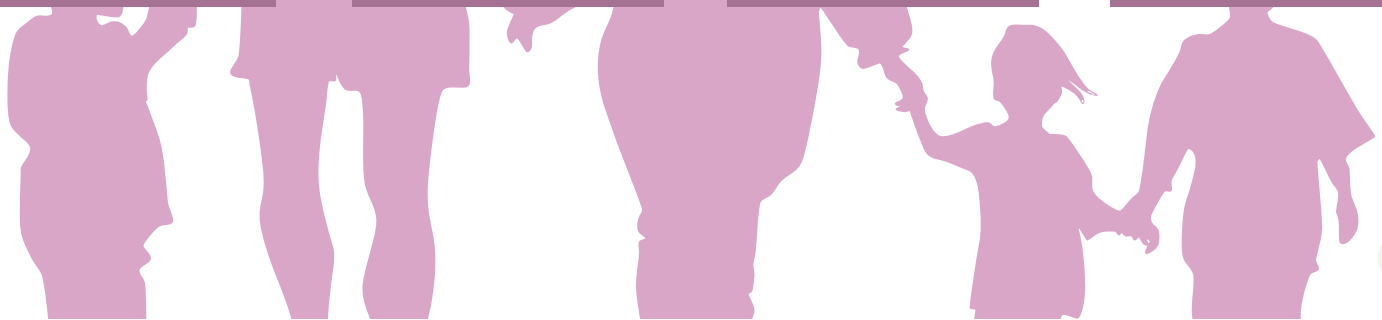
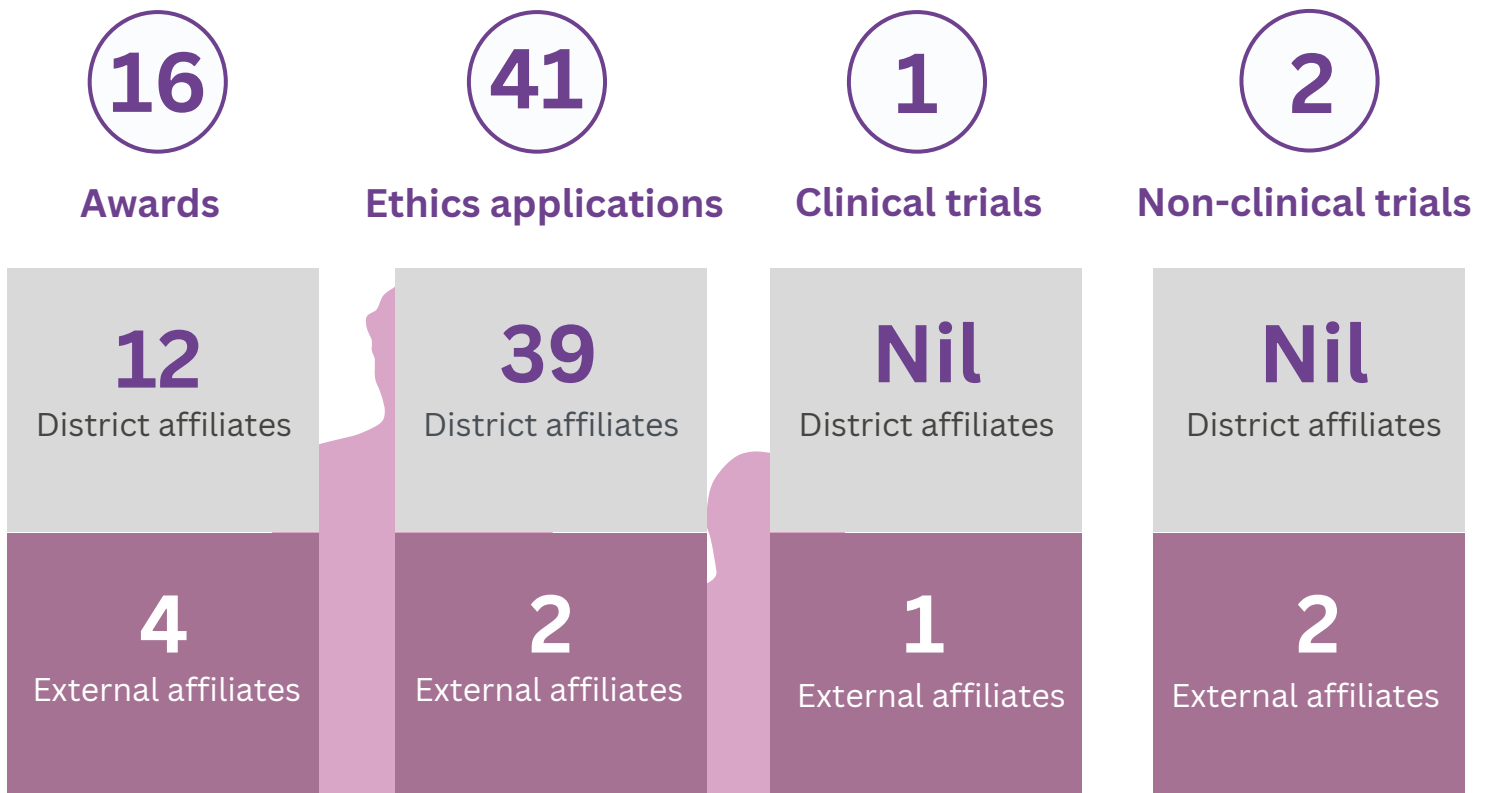
Awarded to District affiliates

**132% increase** in the dollar value of grants received from 2021 to 2022.

**\$21 million**

Awarded to external affiliates

## Awards, ethics applications and trials



# Education programs

The Sydney Institute for Women, Children and their Families (the Institute) managed a suite of education programs throughout 2022.

## Higher Degree Students

In 2022, affiliates across the Institute Network supervised 101 Higher Degree Research candidates. Institute affiliates continue to make significant contributions to the development and future careers of early career researchers through their support of PhD and Masters candidates.



**20% increase**

in supervision of Higher Degree Research candidates.



### Candidates supervised by District affiliates



### Candidates supervised by external affiliates



## Institute student placement program

The Institute student placement program is a novel initiative to connect Masters of Public Health (MPH) candidates from local universities, with District affiliates engaged in research initiatives and projects. In 2022, 12 MPH candidates were supervised through this program.



9

The University of Sydney MPH capstone students

2

University of NSW MPH internship students

1

The University of Sydney MPH professional placement students



# Lifelab Sydney

LifeLab Sydney began its development in 2020 with funding from Sydney Local Health District (the District), and was launched in 2022. This Institute flagship education program teaches adolescents to look at health through a scientific lens to positively impact their attitudes and health behaviours, while also encouraging science and health career pathways.

The first of its kind in Australia, LifeLab Sydney is grounded in a strong international research base. It was developed in close collaboration with LifeLab UK at the University of Southampton in England, as well as science teachers from local District high schools.

LifeLab Sydney provides Year 8 students with the opportunity to explore health sciences through an immersive excursion experience at a state of the art facility at the Charles Perkins Centre, The University of Sydney. Over the course of a school term in 2022, the program includes a series of teaching modules linked to the school curriculum designed to deepen students' learning outcomes.

We would like to acknowledge the many collaborators and volunteers across Sydney Local Health District, The University of Sydney, the NSW Department of Education, and our international partners, who helped bring this initiative to life and who continue to contribute to the success of LifeLab Sydney.

4 schools  
7 classes  
153 students

93% of students reported what they learnt will change how they manage their future health

100% of teachers wish to return to LifeLab



# Events





# Events

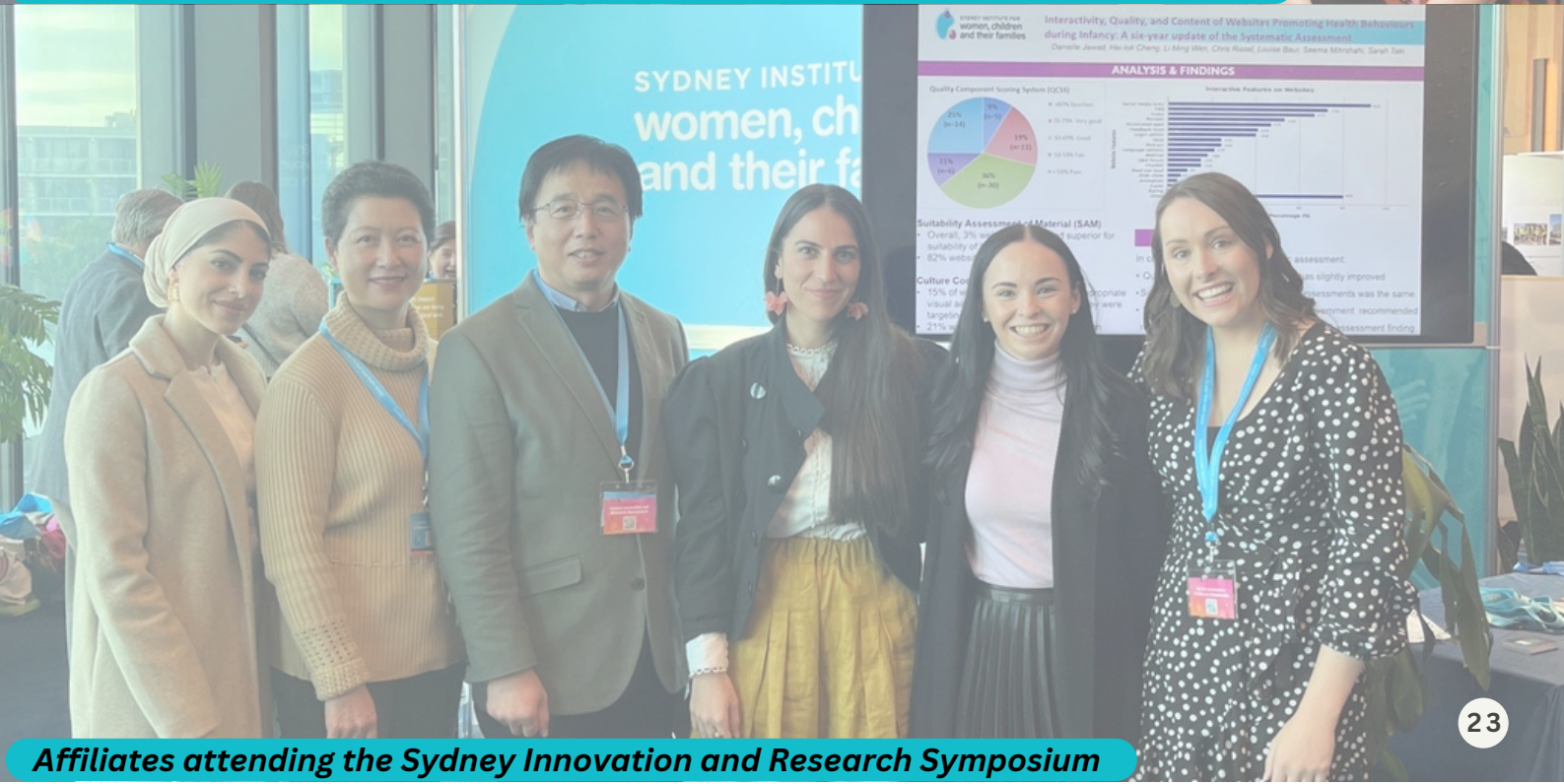
The Sydney Institute for Women, Children and their Families (the Institute) expanded its events portfolio in 2022, and resumed face-to-face gatherings. The **First 2000 Days webinar series** continued, and a new **Health Policy webinar series** was launched. The Institute also launched **Research Networking Meetings**.

The **Research X-Factor** was a key event in the Institute's calendar in 2022. It celebrated the Institute's first seed funding grant program and involved nine finalists presenting their pitches in an effort to win up to \$20,000 each. Four successful applicants were awarded funding for their research.

The Institute also enjoyed hosting a stall at the **Sydney Innovation and Research Symposium**, where 40 affiliates showcased their research posters.



Associate Professor Brad de Vries accepting first place at the Research X-Factor



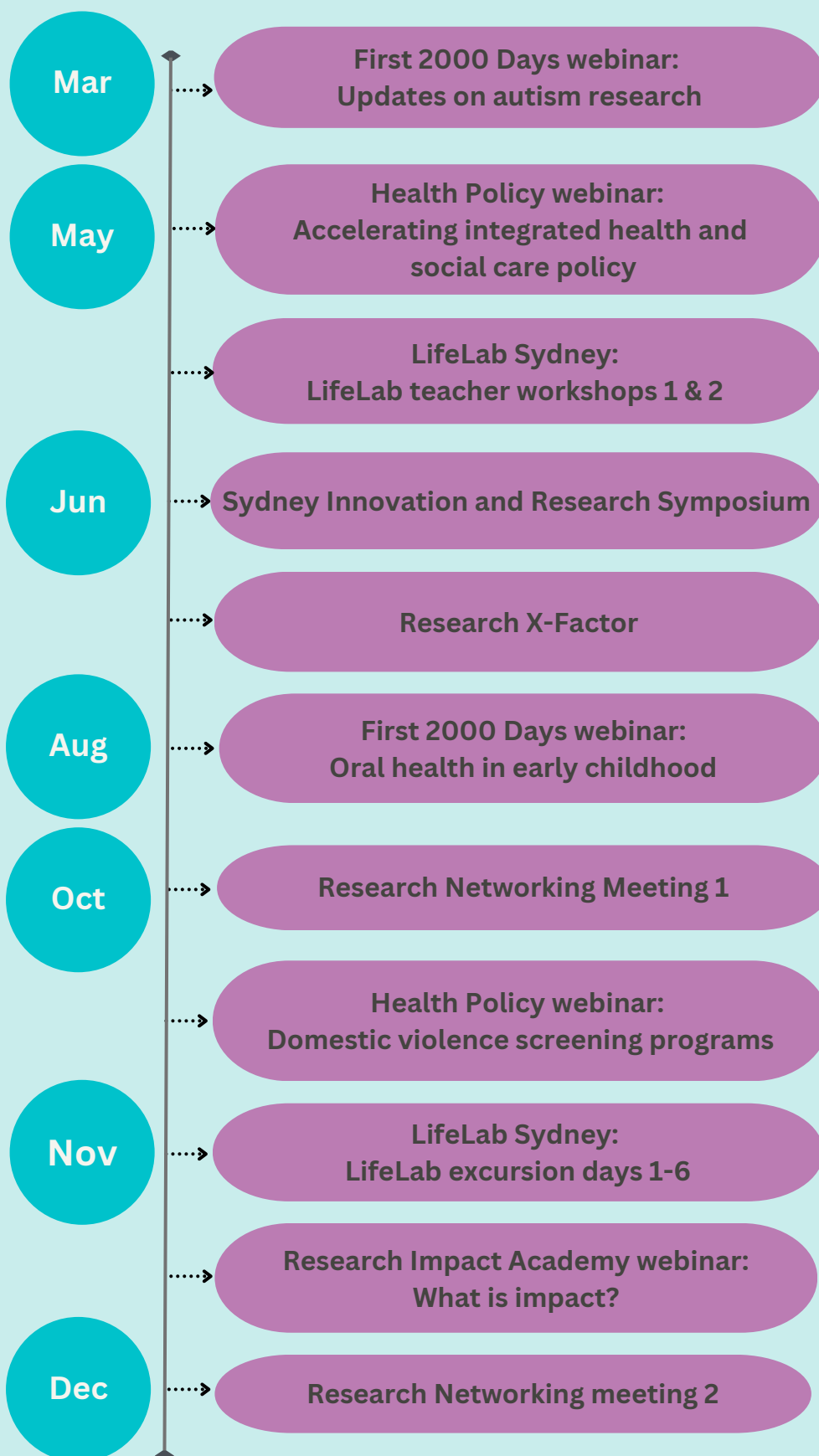
Affiliates attending the Sydney Innovation and Research Symposium

# Event calendar 2022



**120% increase**

in the number of events delivered in 2022, compared to 2021.



# Communications



# Communications

The Sydney Institute for Women, Children and their Families (the Institute) developed its communications, channels and networks significantly in 2022. The Institute Twitter (@SydInstituteWCF) following grew, more newsletters were released, and the Affiliate Network were kept up to date with announcements and activities.

The Institute circulated the 2021 Annual Report and updated the Institute Prospectus to highlight important changes to the Institute Management Group.



## Newsletters

April and October 2022

The Institute presented two newsletters in 2022 which were shared via Twitter and across our Affiliate Network, District research networks and relevant services.



## Twitter @SydInstituteWCF

330 followers

The Institute's Twitter account has continued to provide opportunities to connect with academics and organisations working in the space of women, children and families. The Institute shares research updates, grant information, Institute news, affiliate achievements and publications, and general content related to women, children and families.



## Institute email

[SLHD-SydneyInstituteforWCF@health.nsw.gov.au](mailto:SLHD-SydneyInstituteforWCF@health.nsw.gov.au)

Institute staff continued to monitor emails sent to its general enquiries inbox, replying to enquiries within 48 hours. The [SLHD-SydneyInstituteforWCF@health.nsw.gov.au](mailto:SLHD-SydneyInstituteforWCF@health.nsw.gov.au) general enquiries inbox continues to provide a streamlined and efficient way to distribute information and respond to general enquiries from current and prospective affiliates.



## Join our Affiliate Network

We invite people working in research, education and policy areas related to women, children and their families to formalise their affiliation with the Institute.

For information about Institute affiliate membership email:

**[SLHD-SydneyInstituteforWCF@health.nsw.gov.au](mailto:SLHD-SydneyInstituteforWCF@health.nsw.gov.au)**

## Contact

To contact the Sydney Institute for Women, Children and their Families:

Phone: (02) 9515 1276

Email: [SLHD-SydneyInstituteforWCF@health.nsw.gov.au](mailto:SLHD-SydneyInstituteforWCF@health.nsw.gov.au)

Address: Sydney Institute for Women, Children and their Families  
Level 1, 18 Marsden Street  
Camperdown NSW 2050