

# 2021 Annual Report

Sydney Institute for  
Women Children  
and their Families



SYDNEY INSTITUTE FOR  
**women, children  
and their families**



Sydney  
Local Health District

# Table of Contents

- 3 Introduction
- 5 Management Group
- 6 Affiliates
- 7 Staff and operations
- 9 Research and education
- 15 Communications
- 18 How to join our community and contact information

# Introduction

We are delighted to present the 2021 Annual Report for the Sydney Institute for Women, Children and their Families (the Institute). This year has been successful on so many fronts. Led by the Institute Management Group, staff and working with our exceptional affiliates and partners we have established the Institute as a key hub for research and education across women, children and families services within Sydney Local Health District (the District) and across Sydney.

Our success has been tied to the collaboration of our community and commitment to engage in the Institute's vision to maximise the lifelong health, wellbeing and opportunities for women, children and their families through education, research and innovation.

This report demonstrates the connection of our affiliates to the Institute, our growth in our formal network and the exceptional research and education work that is happening in the space of women, children and families.

We are excited for 2022 and we invite you to join us as the Institute continues to grow and expands our services, programs and exciting events!

# Institute vision

Our vision is to maximise lifelong health, wellbeing and opportunities for women, children and their families through education, research and innovation.

The Institute vision is to be internationally-recognised as a leading centre of education, policy, research and innovation in the pursuit of lifelong health and wellbeing.

The Institute is committed to discovering, developing, defining and distributing the best evidence-based practice and policy to shape models of care, service design and system transformation with a focus on the rapid translation of research into practice.

The Institute will be distinguished as a thought leader and knowledge broker with a record of engaging and inspiring clinicians, researchers, policy makers and the wider community to improve health and wellbeing outcomes for women, children and their families across life stages and places.

# Institute purpose

The Institute is a central hub for research, evaluation, education and policy centred on, and related to, the health and social wellbeing of women, children and their families.

The Institute facilitates collaborative, multidisciplinary research across Sydney Local Health District and our partner institutions across the Sydney Research Precinct and government and non-government agencies.

Our members share resources, information, concepts and values and work together to build the capacity of our clinicians, researchers and community health professionals to empower women, children and their families to take control of their own health.



# Institute Management Group



**Dr George Johnson**  
**Institute Director**  
Director, Sydney Institute for Women,  
Children and their Families  
Acting General Manager, Public Health Unit,  
Sydney Local Health District



**Professor Adrienne Gordon**  
**Institute Co-Chair**  
Senior Staff Specialist Neonatologist,  
Royal Prince Alfred Hospital  
Clinical Professor, University of Sydney



**Professor Jon Hyett**  
**Institute Emeritus Co-Chair**  
Professor of Obstetrics and Gynaecology,  
Western Sydney University,  
South Western Sydney Local Health District



**Professor Jonathan Carter**  
**Institute Clinical Executive Sponsor**  
Clinical Director, Women's Health, Neonatology,  
Paediatrics, Sydney Local Health District  
Conjoint Professor, University of Sydney



**Professor Sameer Bhole AM**  
**Institute Management Group Member**  
Clinical Director, Oral Health Stream,  
Sydney Local Health District  
Clinical Professor, University of Sydney



**Ms Katie Perren**  
**Institute Secretariat**  
Interim Deputy Director, Sydney Institute for Women,  
Children and their Families



**Professor Sue Woolfenden**  
**Institute Co-Chair**  
Director, Community Paediatrics, Sydney Local Health District  
Adjunct Associate Professor, School of Public Health, USYD  
Deputy Stream Director, ELDoH, SPHERE  
NHMRC Senior Research Fellow, UNSW



**Professor John Eastwood**  
**Institute Emeritus Co-Chair**  
Clinical Advisor, Clinical Services Integration and Population  
Health, Sydney Local Health District  
Clinical Professor, University of Sydney  
Adjunct Professor, University of New South Wales



**Ms Lou-Anne Blunden**  
**Institute Executive Sponsor**  
Executive Director, Clinical Services Integration  
and Population Health, Sydney Local Health District



**Ms Dianna Jagers**  
**Institute Management Group Member**  
General Manager, Community Health Services,  
Sydney Local Health District

# Institute affiliates

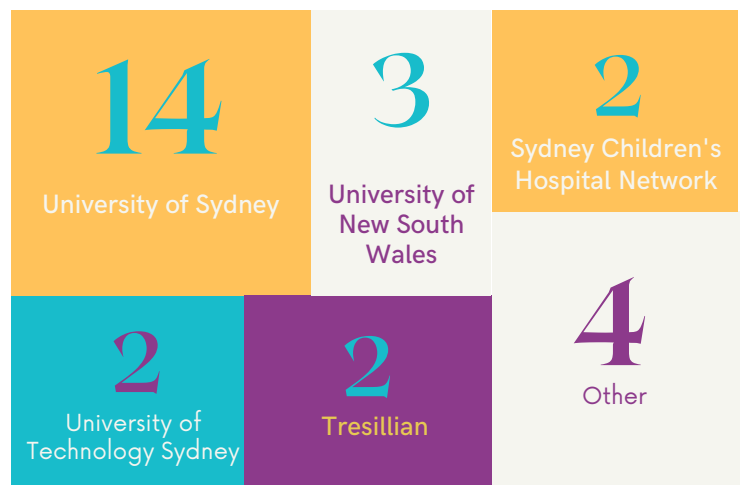
The Institute began to build the Institute affiliate network in May 2020, by inviting individuals to formalise their affiliation with the Institute. The network now includes formal affiliates from various backgrounds, services, professions and organisations, all of whom are engaged with the health and wellbeing of women, children and their families. The network includes District and external affiliates.

At the time of research reporting for 2020-2021 (April 2021), the Institute had 73 formal affiliates, with 46 District affiliates and 27 external affiliates. By November 2021, the Institute had formalised 84 affiliates, and is expecting the network to grow to 100 affiliates in 2022. The below information is based on the Institute affiliate network at the time of research reporting.

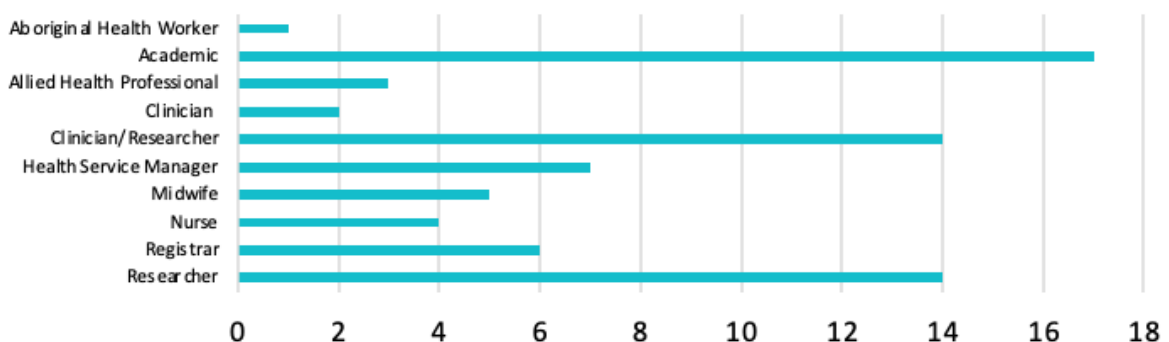
## District affiliates



## External affiliates



The chart below shows the affiliates by profession/background, with academics, clinicians and researchers the most commonly reported.





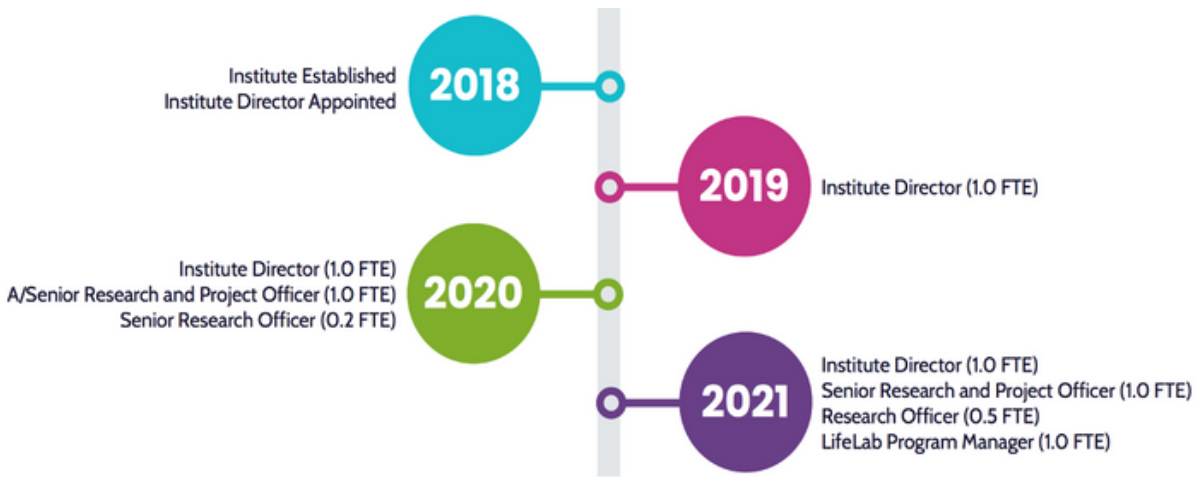


# Staff and operations

# Institute staff

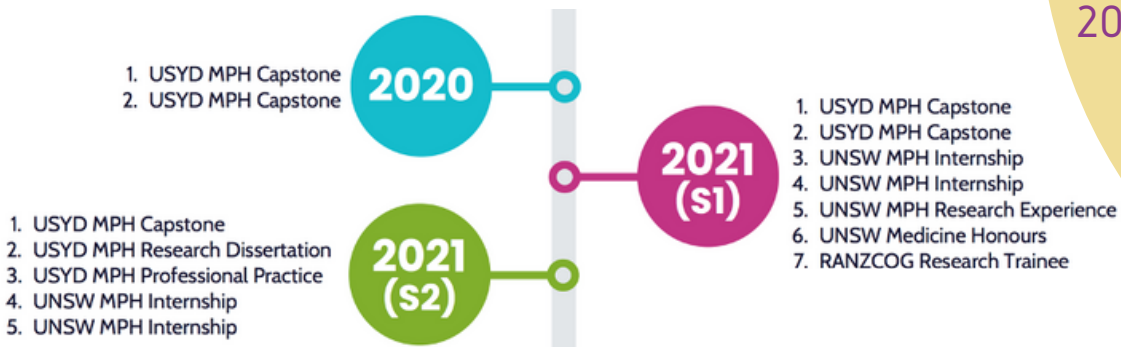
## Our team

Since establishment in 2018, the Institute's core staff group has grown. The Acting Director was appointed in late 2018, followed by the Acting Senior Research and Project Officer in early 2020; with both roles permanently recruited over time. In the last two years subsequent acting staff have worked for the Institute in providing support on Institute research projects. The image below shows the activity of staff since 2018.



## Institute Student Placement Program

The Institute Student Placement Program started in the second half of 2020, with two University of Sydney (USYD) Masters of Public Health students. This program experienced significant growth in 2021. In Semester one 2021, the Institute Student Placement Program coordinated projects for seven students from USYD and the University of New South Wales (UNSW). In Semester two, 2021, the program hosted five students from USYD and UNSW.





# Research and education



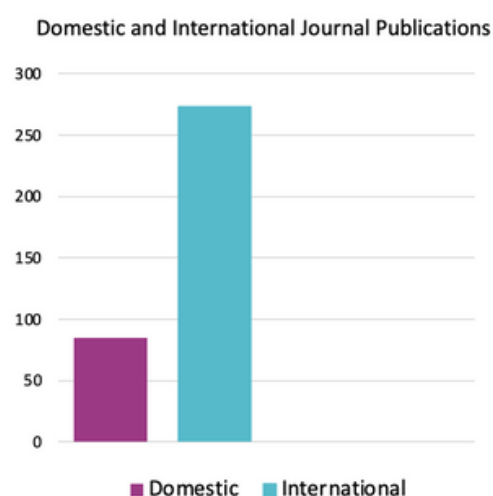
# Research and education

The Institute submitted a report of their research output to the District Research Office for inclusion in the District's Annual Research Report. This report was submitted in July 2021, and included information on the Institute and its affiliates' publications, book chapters, student supervision, presentations, submitted and awarded grants, awards, ethics applications and active clinical and non-clinical trials. The reporting period covered January 2020 to April 2021. Key information from the Institute's Research Output Report is summarised below and highlights the exceptional work of our affiliates and the growing Institute community. For affiliate information to be included in this reporting they provided written approval and updated the Institute of their output and achievements in 2020/21.

## Total publications 2020/21



The Institute reported more publications from external affiliates than District affiliates, even though the majority of Institute affiliates have District appointments. There are more researchers and academics within the cohort of external affiliates, which may explain this output. In summary, the network of our affiliates is showing exceptional academic output across women, children and families research.

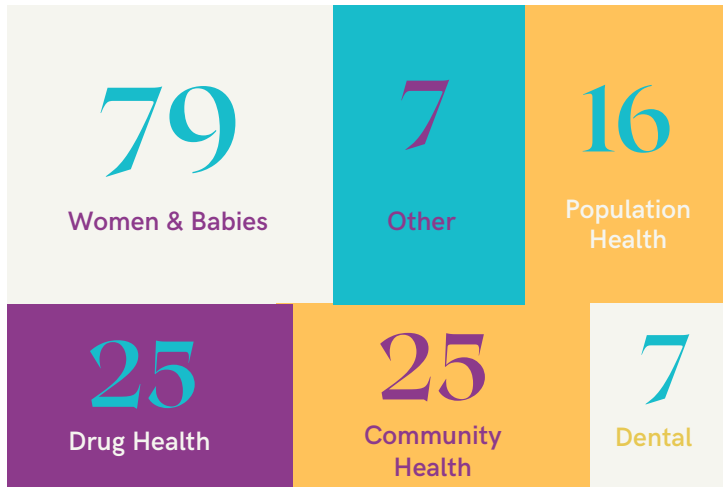


The Institute reported significantly more publications in international journals than in domestic journals. There were 273 publications in international journals, compared to 85 in domestic journals.

The 2020-2021 reporting demonstrated an 867% increase in affiliate publications due to our formalised Institute affiliate network and our growing community of researchers.

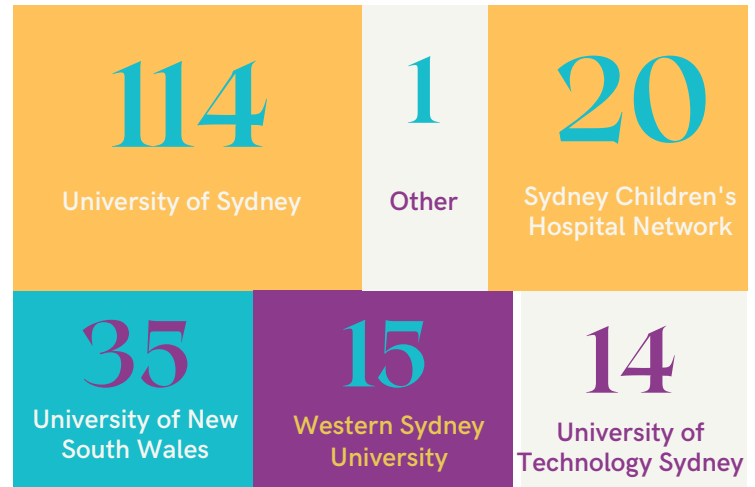
# Total publications reported by department/organisation

## District affiliates' publications



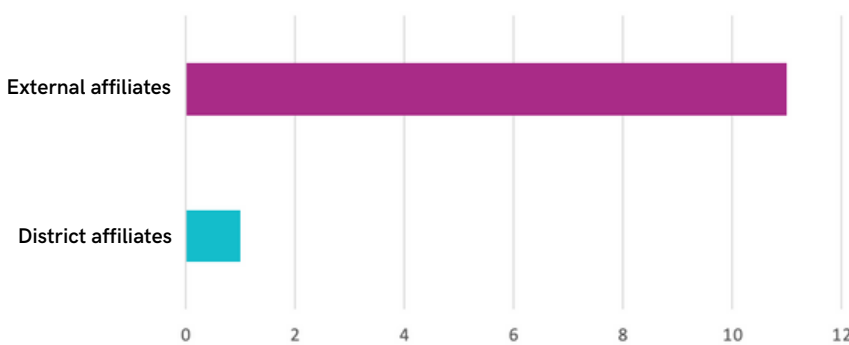
Institute affiliates from the District Women and Babies Services reported the most publications for 2020-2021 for District affiliates. The Institute had nine affiliates from this department at the time of reporting.

## External affiliates' publications



Institute affiliates from the University of Sydney reported on the most publications for 2020-2021 for external affiliates. The Institute had 14 affiliates from the University of Sydney at the time of reporting. The University of Sydney represented the largest cohort of external affiliates.

## Book chapters



In the previous research reporting period, the Institute did not report on any affiliated book chapters having been published. In the current reporting period (2020/21) the Institute reported 12 book chapters that had been published among its affiliate network.

## Higher degree students

Overall, there were 84 higher degree research students supervised by Institute affiliates. Of these students, 43 were supervised by District affiliates, and 41 were supervised by external affiliates.

The 2020-2021 reported a 223% increase in higher degree students compared to the Institute's prior reporting period (2019-2020).

## Higher degree students

29

District affiliate  
PhD students

14

District affiliate  
Masters students

27

External affiliate  
PhD Students

14

External affiliate  
Masters Students

## Institute appointed Masters students

Of the 14 Masters students supervised by District affiliates, 6 of these were appointed through the Institute Student Placement Program, and this demonstrates the value of the Institute student placement program in increasing students across the District. This program was not offered to external affiliates during the reporting period.

## Presentations

59

District  
affiliates

25

External  
affiliates

84

Total

There were more presentation activities reported from District affiliates compared to external affiliates. In the previous research reporting period, 85 presentations were reported. The 2020-2021 did not demonstrate an increase in this area, likely due to the impacts of the COVID-19 pandemic.

The majority of presentations by Institute affiliates were given domestically during the reporting period.



## Grants awarded



District affiliates were awarded over \$20 million in grant funding.

External affiliates were awarded close to \$14 million in grant funding.

During the reporting period, Institute affiliates were awarded a total of \$34 million in grant funding.

## Awards, ethics applications & active clinical trials

District affiliates reported more awards than external affiliates. In the previous research reporting period (2019-2020), five awards were won by Institute affiliated researchers. This remained stable in the 2020-2021 reporting period.

District affiliates submitted more ethics applications than external affiliates. It is important to note that affiliates do not commonly report on their ethics applications and therefore this needs to be considered for this indicator.

Overall, there were seven active trials reported by Institute affiliates. External affiliates reported being involved in more clinical trials than District affiliates.



The reporting for active clinical trials increased in the 2020-2021 reporting period from one in 2019-20 to five in 2020-2021.





# Communications



# Institute communications

The Institute has grown its communications significantly over 2020 and 2021. The Institute has launched a Twitter account, newsletters and built up its network for email communication.

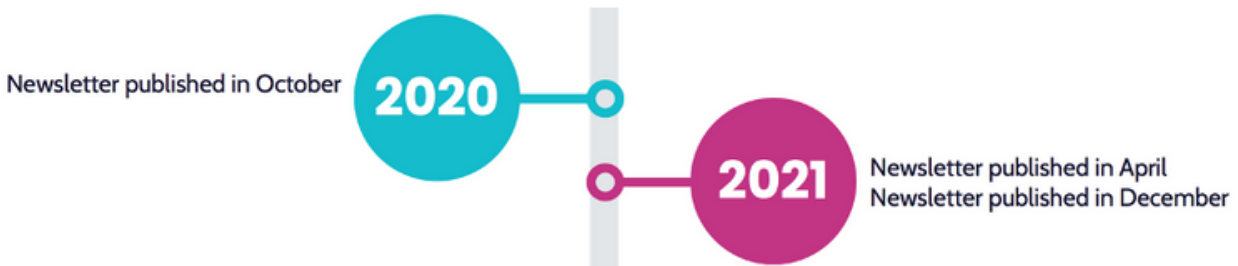
Another key mechanism for the Institute's communication is its Prospectus. The first edition of the Prospectus was published in 2018, and this was updated in 2021 to reflect recent achievements and staffing changes.

The Institute communicates with its affiliate network through three main channels:

1. Newsletters
2. Twitter
3. Email

## Newsletters

The Institute sends newsletters to its distribution mailing list (approximately 500 recipients), and to its affiliate network. The newsletter is shared through other District research networks, as well as via Twitter. The Institute's capacity to publish newsletters in 2021 was impacted by the COVID-19 pandemic, however there were still two issues in 2021.



## Twitter

The Institute's Twitter account has been invaluable for connecting with academics and organisations working in the space of women, children and their families. The Institute posts on Twitter daily, sharing research updates, grant information, Institute news, its affiliates' achievements and publications, and general content related to women, children and their families. The Twitter account has doubled in followers in 2021.

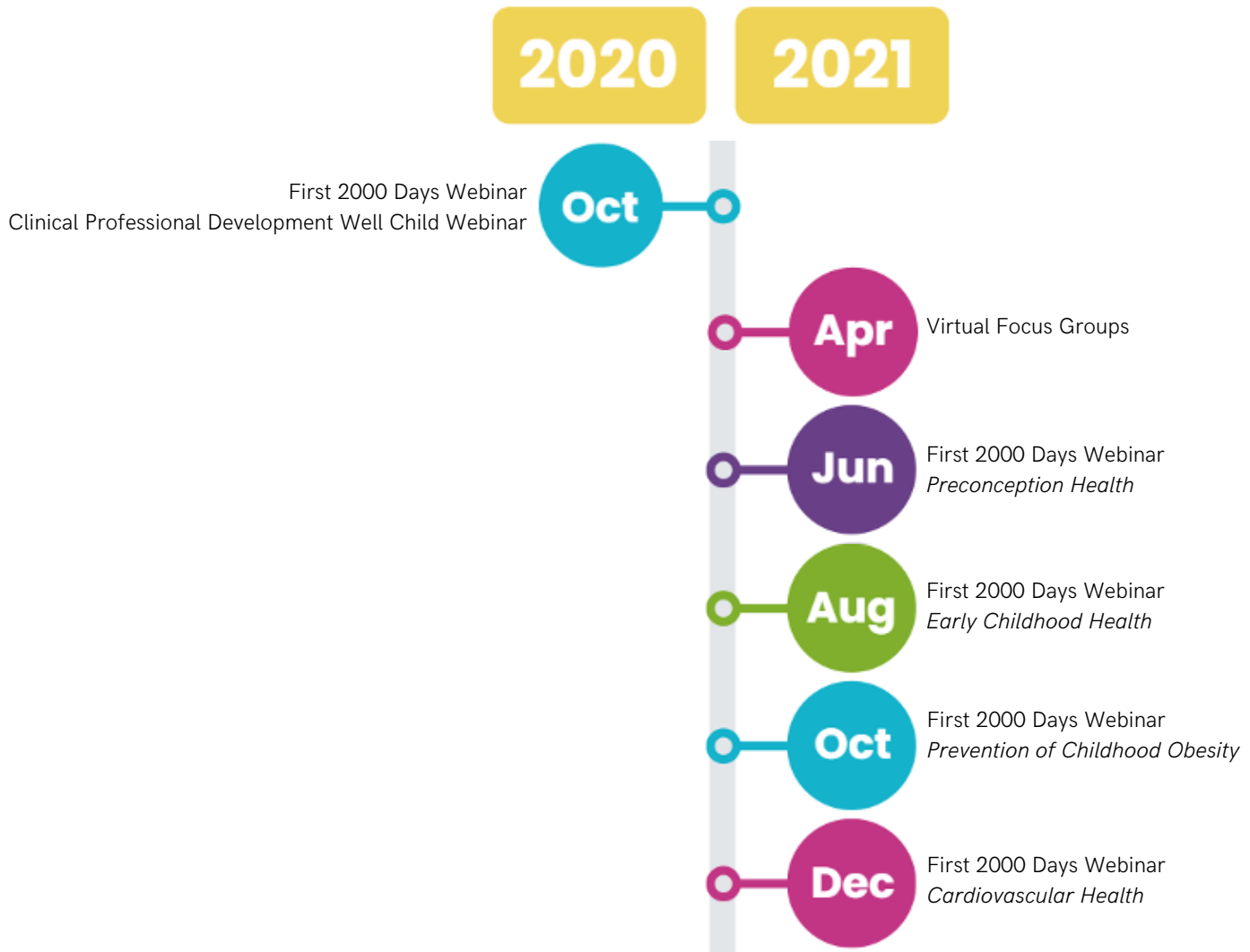
201

Twitter followers as of November 2021

1300

Profile views per month

# Events



In 2020, the Institute presented two events. In 2021, there were five events.

The Institute began hosting large events in 2020, and built on its program of events significantly in 2021. All events in 2020 and 2021 have been held virtually due to the COVID-19 pandemic. The events enhance the Institute’s communication platform, showcase affiliates’ work, and contribute to providing education and research discussions relating to the health and wellbeing of women, children and their families.

# Want to join our community?

## How to become an affiliate

We invite staff and partners to formalise their affiliation with the Institute, where we strive to offer networking, collaboration, and training and education opportunities.

If you would like more information on becoming an affiliate, please email: [SLHD-SydneyInstituteforWCF@health.nsw.gov.au](mailto:SLHD-SydneyInstituteforWCF@health.nsw.gov.au)

## How to contact the Institute

If you wish to contact the Sydney Institute for Women, Children and their Families, you can contact us on:

Tel: 02 9515 1276

Email: [SLHD-SydneyInstituteforWCF@health.nsw.gov.au](mailto:SLHD-SydneyInstituteforWCF@health.nsw.gov.au)

Sydney Institute for Women, Children and their Families  
Level 1, 18 Marsden Street  
Camperdown  
NSW 2050





**SYDNEY INSTITUTE FOR  
women, children  
and their families**



**Sydney  
Local Health District**