

# Yaralla Estate – A jewel in the inner-west's biodiversity crown



InSight Ecology  
to  
Yaralla Estate Community Advisory Committee  
16 September 2014

- Why is Yaralla ecologically special?
- Priorities for conservation action – protect & re-connect, abate threats, planning
- Opportunities for integrating health with biodiversity conservation – a model site?





- Species-rich avifauna – key declining woodland birds, gone from the inner-west, threatened birds, frogs, bats
- Intercontinental migratory waterbirds present
- Important habitats – breeding, urban buffer, including for some threatened fauna
- Endangered Ecological Communities present (3)
- Key potential connectivity role – local and district
- High habitat restoration potential – not alienated by other impacts/development





# Sydney Turpentine-Ironbark Forest habitats







# Aquatic fauna and their habitats





remnant coastal  
saltmarsh (EEC) at  
Rivendell



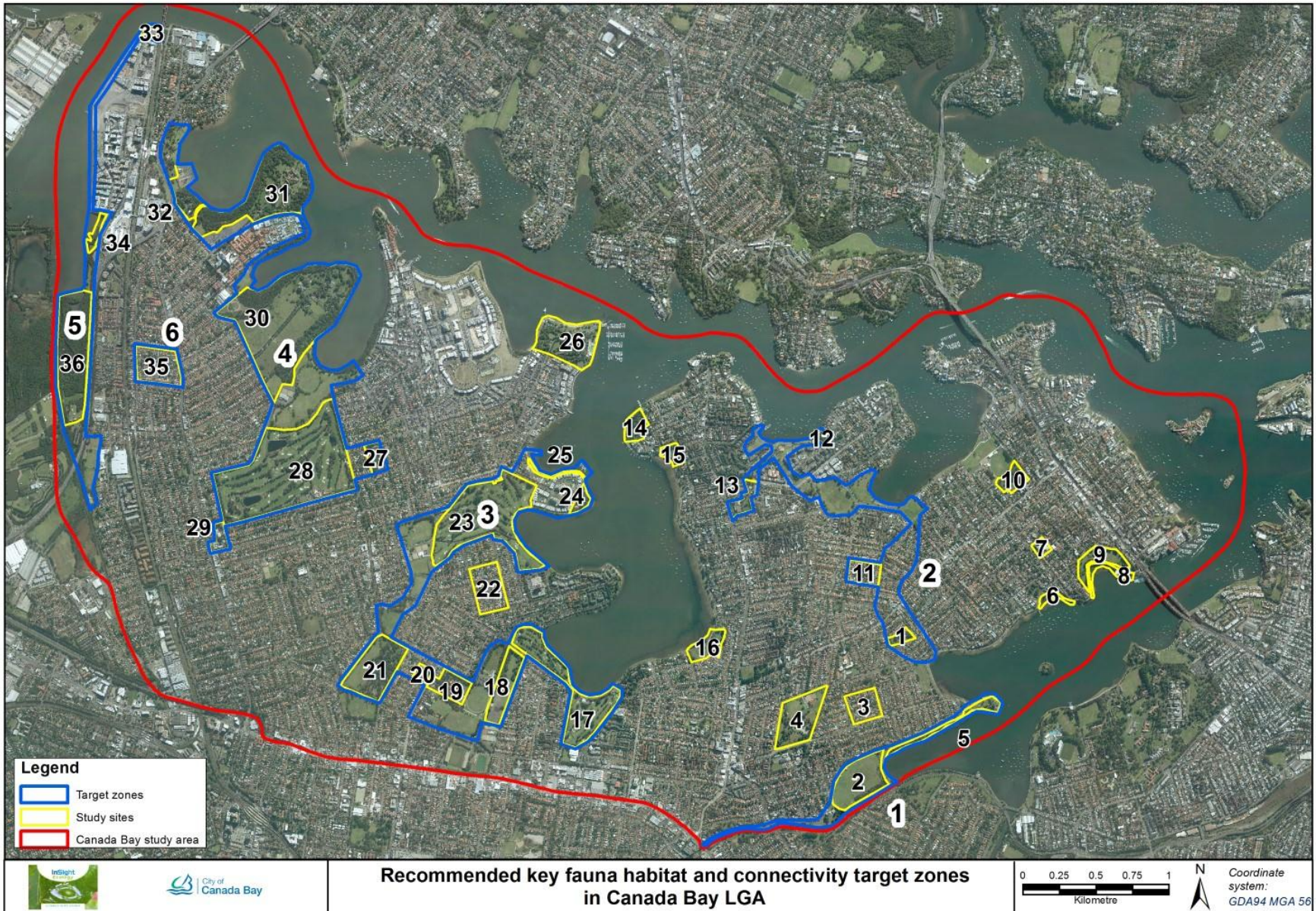
# mangrove communities (some old-growth)



# Prioritising conservation action



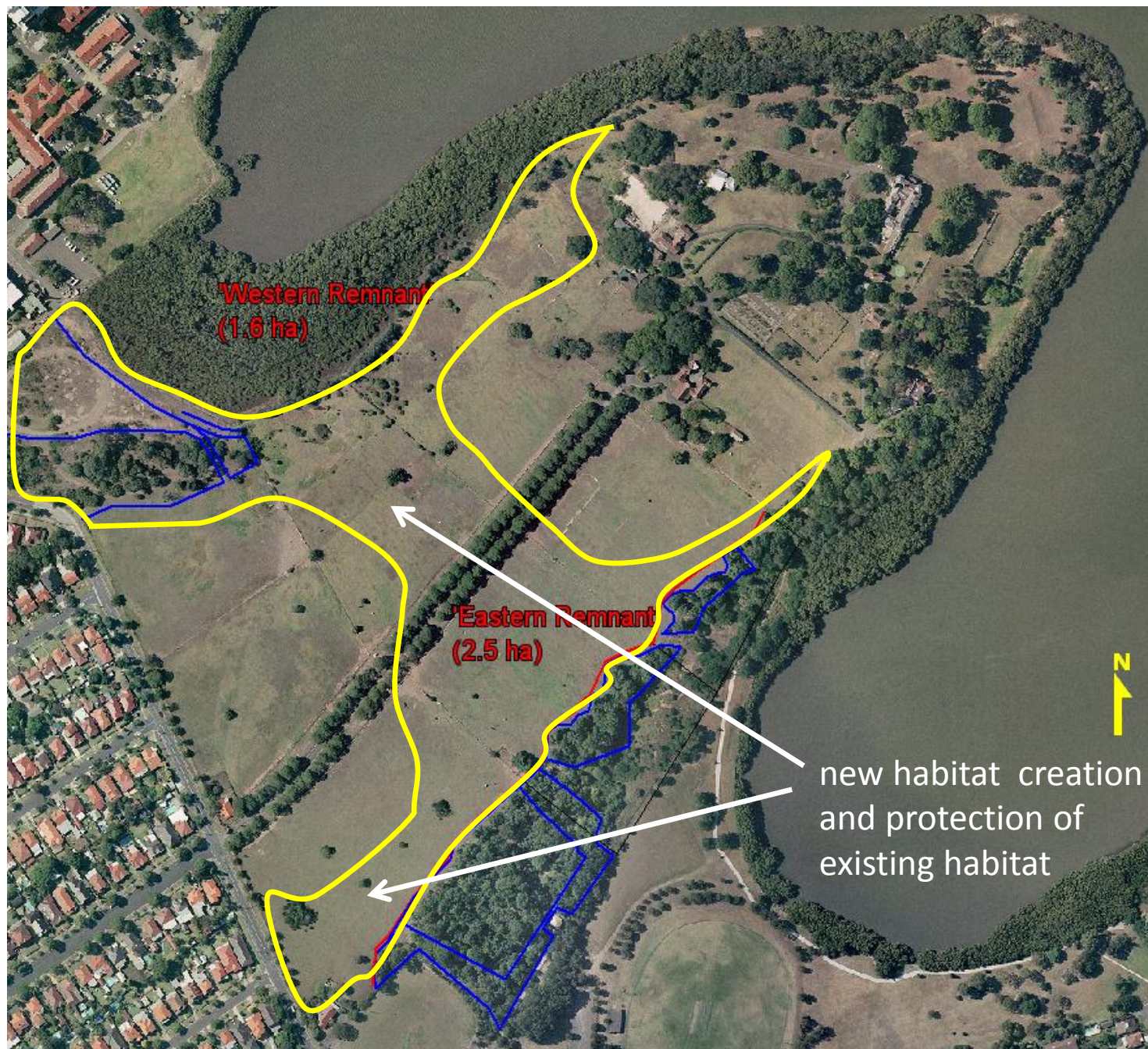
# Key habitat & connectivity target zones





While all responsibility has been taken to ensure that the contents of this publication are factually correct, no responsibility is accepted for the accuracy or completeness of the contents. No liability is accepted for any loss or damage that may be occasioned directly or indirectly through the use of reliance on the contents of this publication.





# reviewing the draft management plan



(Attachment 5: Draft Yaralla Estate Dame Eadith Walker Management Plan 2014-2016)

# Reduce key threats, e.g. fox & cat control



Soft-hold fox trap  
(traps.com.au)

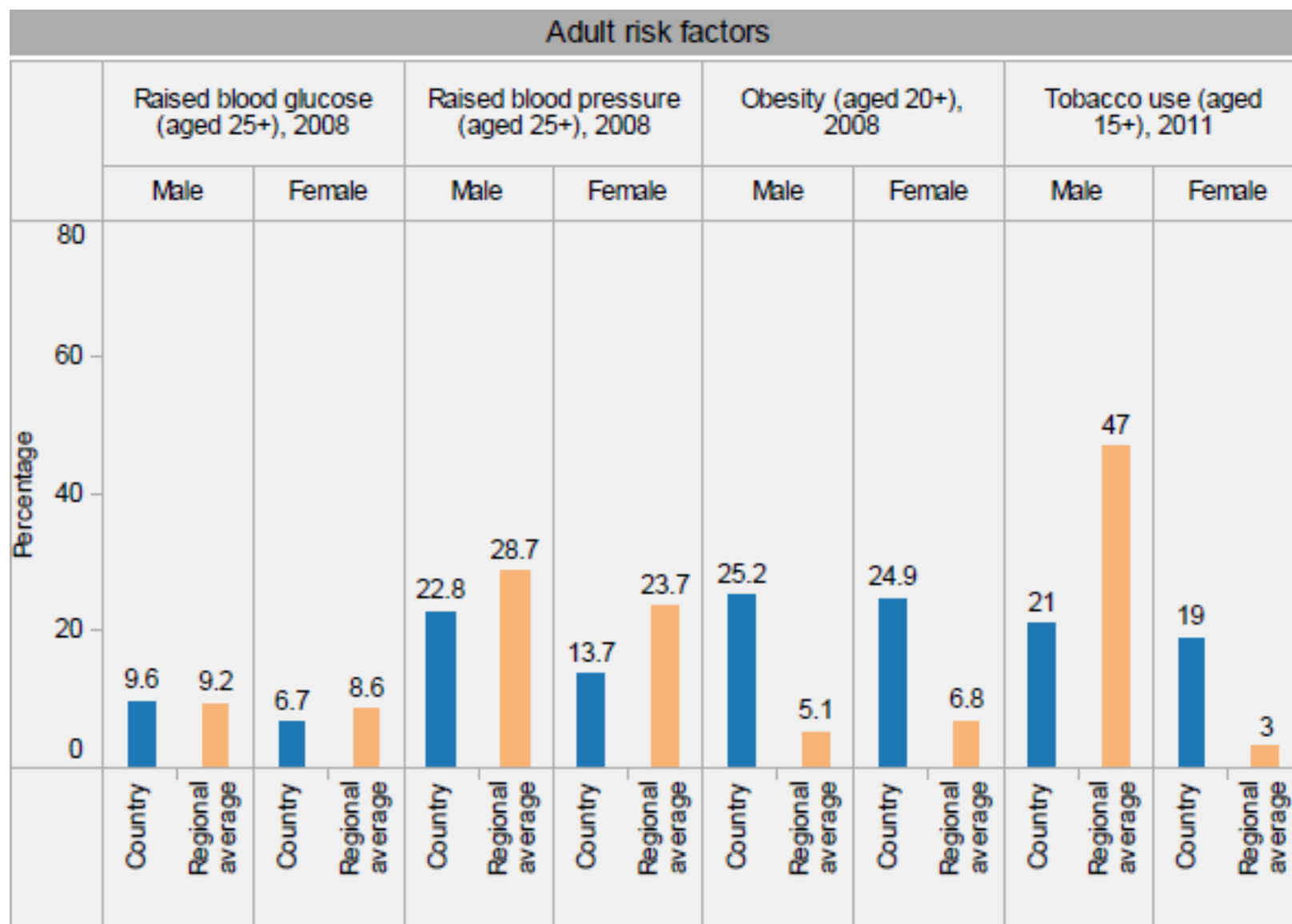


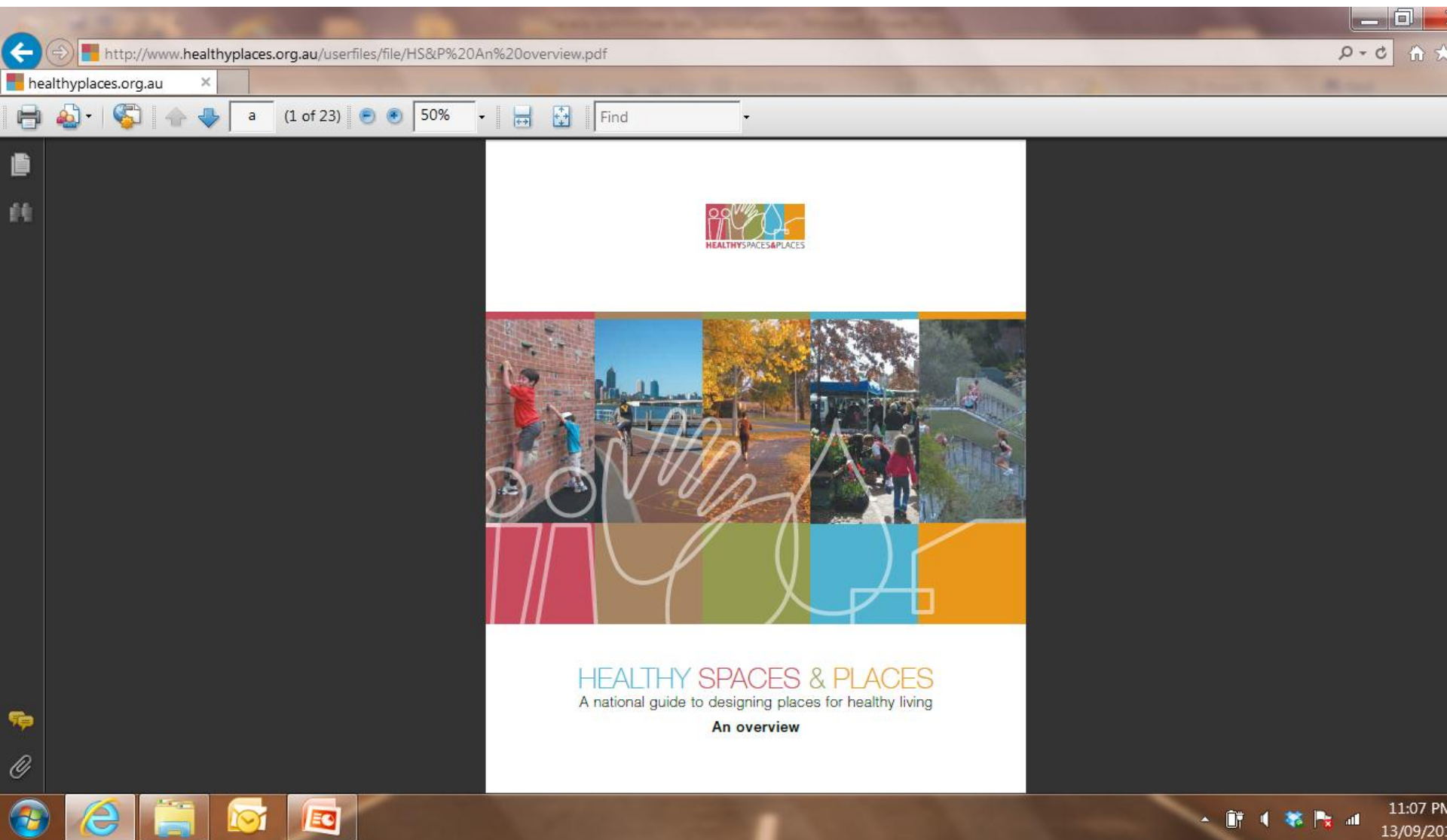
Soft jaw & cage  
cat traps  
(trapping.com.au,  
neighborhoodcats.org)



# Opportunities for integrating health and biodiversity conservation

- Demonstrated links between healthy urban ecosystems and beneficial health outcomes, especially for mental health (e.g. Mitchell & Popham, *The Lancet* 2008; Wells *Environ. Behav.* 2000)
- Adult risk factors – obesity, raised blood pressure, et al.
- At Yaralla - potential benefits from direct and indirect participation in re-creating habitat, monitoring the return of key species, community garden, bird sensory walk, human refuge from urban pressures....





<http://www.healthyplaces.org.au/userfiles/file/HS&P%20An%20overview.pdf>

# Acknowledgements

- NSW Health (Sydney Local Health District) for access to Yaralla Estate and the opportunity to give this presentation to the Committee
- Photography - Andy Doldissen (many local bird photos), Mandy Falkenmire (Bar-tailed Godwit), [Inga.Simpson.com.au](http://Inga.Simpson.com.au) & Ben McGruer, [keys.lucidcentral.org](http://keys.lucidcentral.org) (Rakali), Cathy Merchant (Buff-banded Rail), Greg Clancy (birds in the hand), InSight Ecology (birds and habitats), [ibc.lynxeds.com](http://ibc.lynxeds.com) (White-cheeked Honeyeater), David Cook (Superb Fairy-wren), Neil Fifer/[birdforum.net](http://birdforum.net) (White-browed Scrubwren), Spotted Pardalote ([ibc.lynxeds.com](http://ibc.lynxeds.com), Lindsay Hansch), Red-rumped Parrot ([birdsinbackyards.net](http://birdsinbackyards.net), K. Vang & W. Dabrowka), Grey Fantail, Golden Whistler (male), Sacred Kingfisher and Mangrove Gerygone ([en.wikipedia.org](http://en.wikipedia.org)) and aerial photographs supplied by City of Canada Bay Council 2011
- Some of the material used in this presentation was part of a recent fauna study (2013-14) undertaken by InSight Ecology for City of Canada Bay Council. Council's cooperation and assistance is gratefully acknowledged especially that of Robert Stevenson who along with the band of dedicated Bushcare volunteers enthusiastically supported the project. The full report of the study is available on the websites of NSW Health (SLHD) and City of Canada Bay Council.